

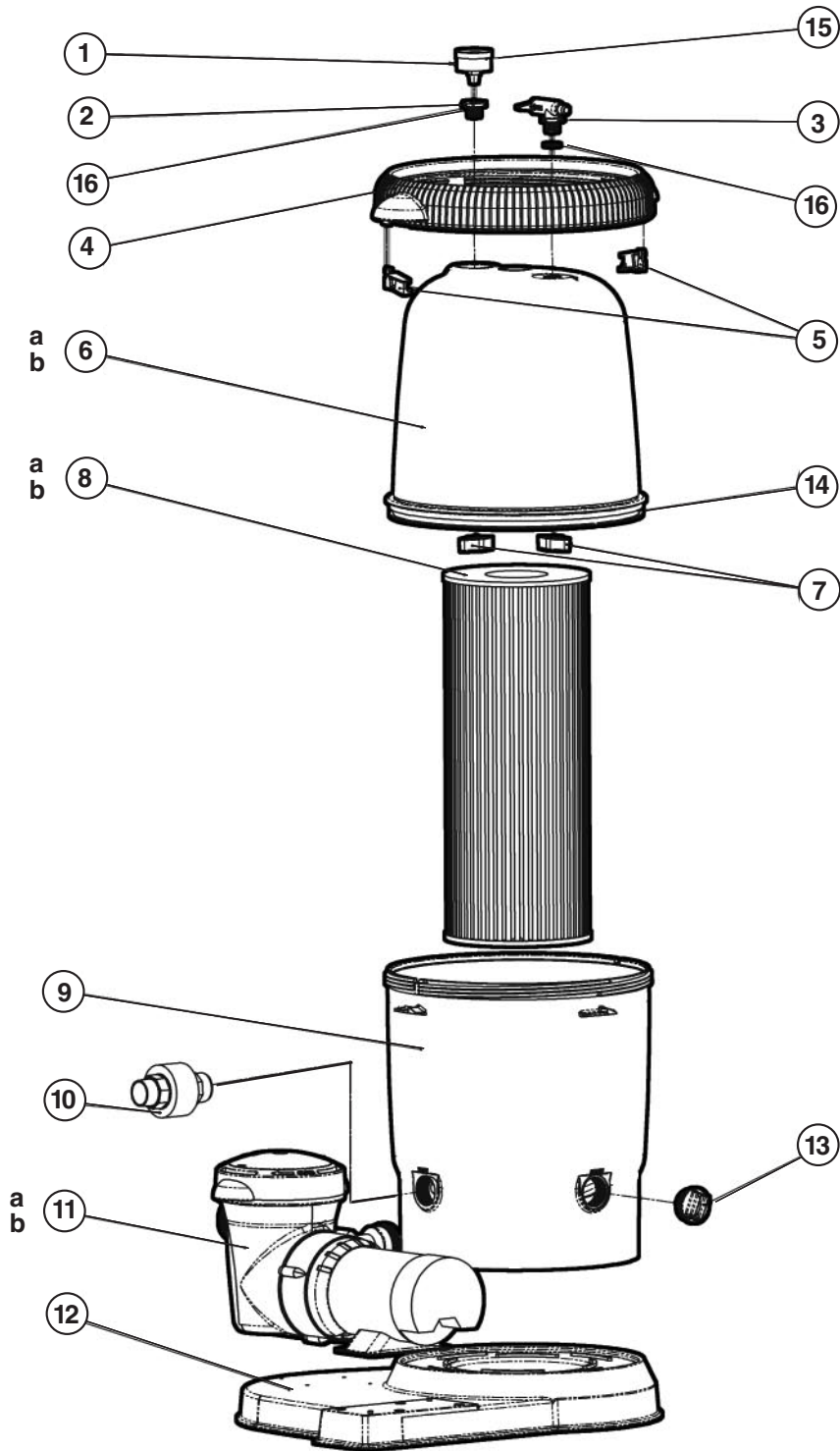


# XStream® Filtration Series

CARTRIDGE FILTER SERIES REPLACEMENT PARTS

## Parts Diagram

Filters





# XStream® Filtration Series

ABOVE-GROUND FULL-FLO ELEMENT FILTER SYSTEMS

Filters



CC10092S XStream Filtration Series



CC15093S XStream Filtration Series

## XStream Filtration Full-Flo Element Filter System Buying Guide

Model Number	Filter	Dimensions		Pump	System H.P.	System Components	Ctn. Qty.	Ctn. Weight
		Width	Height					
CC10092S	CC1000	21"	30 1/2"	Power-Flo Matrix®	1	2,3	1	67 lbs.
CC100922S	CC1000	21"	30 1/2"	Power-Flo Matrix	1hp-2spd	2,3,4	1	67 lbs.
CC10092SFT	CC1000	21"	30 1/2"	Power-Flo Matrix	1	2,3,5	1	67 lbs.
CC10092STL	CC1000	21"	30 1/2"	Power-Flo Matrix	1	1,2,3	1	67 lbs.
CC15093S	CC1500	21"	37 1/4"	Power-Flo Matrix	1 1/2	2,3	1	75 lbs.
CC150932S	CC1500	21"	37 1/4"	Power-Flo Matrix	1 1/2hp-2spd	2,3,4	1	75 lbs.
CC15093SFT	CC1500	21"	37 1/4"	Power-Flo Matrix	1 1/2	2,3,5	1	75 lbs.
CC15093STL	CC1500	21"	37 1/4"	Power-Flo Matrix	1 1/2	1,2,3	1	75 lbs.

\*"TL" pump includes 3' twisting lock cord.

### System Components

- 3' twist lock cord
- 1 1/2" hose packages include: two (2) 1 1/2" x 6' lengths of hose, hose adapters, hose clamps
- Union connection
- 2-speed pump
- Timer

### Optional Accessories

Model Number	Description	Ctn. Qty.	Ctn. Weight
SP1500UNPAK2	Set of two (2) quick connect unions	50	32 lbs.

**XStream size for an XStream Clean. Once you see the XStream filtration from Hayward, you'll be hooked. Its massive size and incredible performance mean years of trouble-free filtration. It has an extra large capacity for dirt and debris and a quick-release, high-capacity air relief valve. But size isn't the only thing this filter's big on.**

### Applications

- Above-ground pools/on-ground pools

### Features

- Designed specifically for the rigors of above-ground filtration
- Engineered for easy use with flexible or rigid plumbing
- Sleek, flush mounted pressure gauge
- Quick release, high capacity air relief valve
- Glass reinforced, non-corrosive filter tank will provide years of trouble-free operation
- Easy-Lok™ ring design allows quick access to all internal components in a single turn
- Unique safety catch prevents over-tightening of the lid and efficiently secures the filter for high performance operation
- Longer, more efficient filtering life. Larger filter body ensures an equal distribution of dirt and debris throughout the filtering element

### Optional Microprocessor Pump Timer Features

- Audible beep
- Preset filtration settings
- Manual override
- Retro fits to any Flex48 frame motor
- Order system with 'FT' suffix



See page 103 for Timer

### Performance Data

Filter	Effective Filtration Area	Design Flow Rate	Turnover (In Gallons)	
			8 Hours	12 Hours
CC1000	100 ft. <sup>2</sup>	80 GPM	38,400	57,600
CC1500	150 ft. <sup>2</sup>	120 GPM	57,600	86,400

### Replacement Elements – Page 42