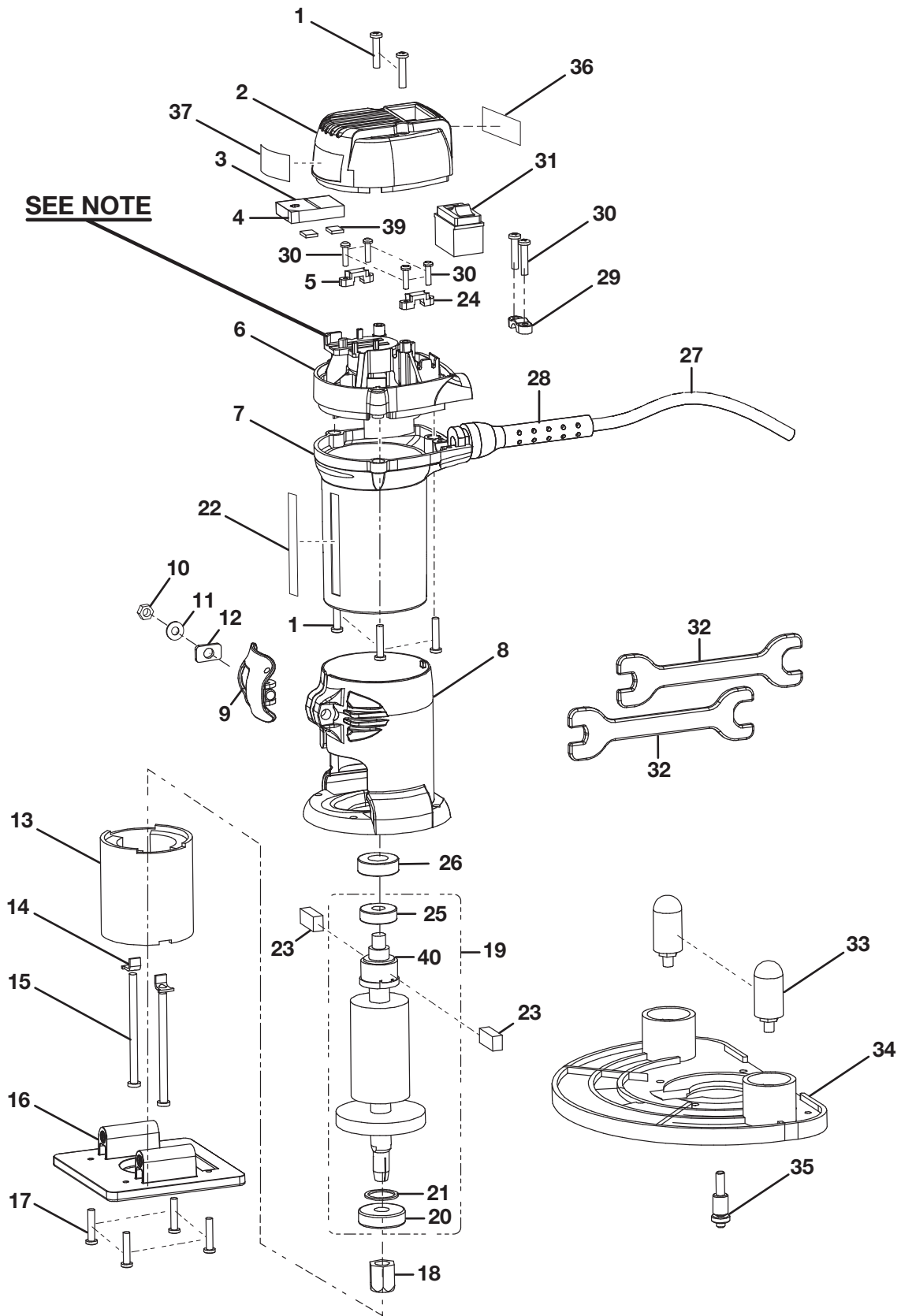


**RYOBI
LAMINATE TRIMMER
MODEL NO. TR45
REPAIR SHEET**

RYOBI LAMINATE TRIMMER - MODEL NUMBER TR45



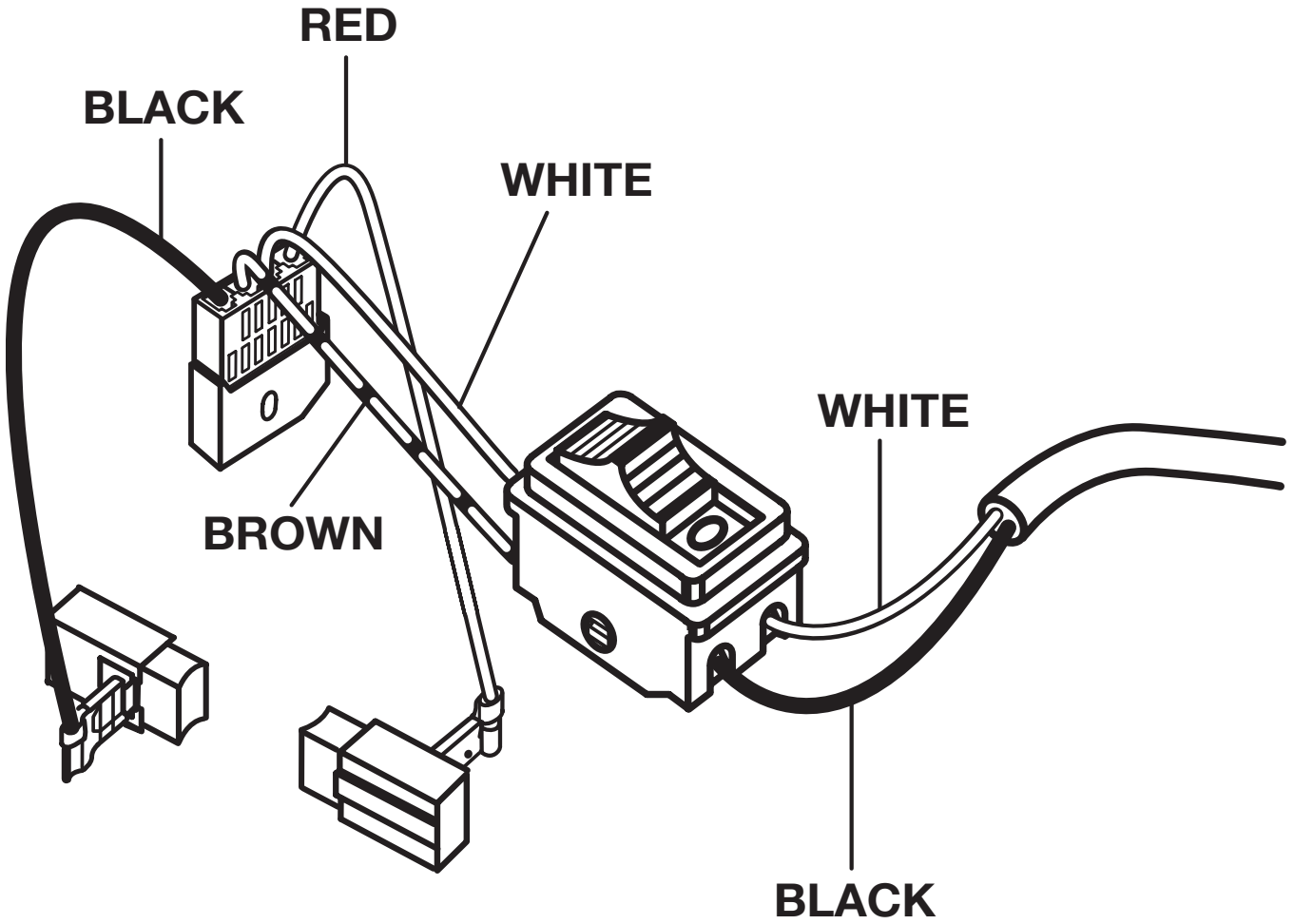
NOTE: - THE ASSEMBLY SHOWN REPRESENTS AN IMPORTANT PART OF THE DOUBLE INSULATED SYSTEM. TO AVOID THE POSSIBILITY OF ALTERATION OR DAMAGE TO THE SYSTEM, SERVICE SHOULD BE PERFORMED BY YOUR NEAREST RYOBI REPAIR CENTER.

RYOBI LAMINATE TRIMMER – MODEL NUMBER TR45

The model number will be found on a plate attached to the motor housing. Always mention the model number in all correspondence regarding your **LAMINATE TRIMMER** or when ordering repair parts.

PARTS LIST

KEY NO.	PART NUMBER	DESCRIPTION	QTY.
1	6620805	* SCREW (M4 X 16 mm PAN HD.)	2
2	512070001	TOP CAP	1
3	290083003	WIRE ASSEMBLY	1
4	840108001	RECTIFIER	1
5	512225402	LEFT BRUSH MOUNT	1
6	512044002	MOUNTING FRAME	1
7	512045001	MOTOR HOUSING	1
8	342073001	HOUSING BASE	1
9	301040001	LATCH ASSEMBLY	1
10	6797401	LOCK NUT	1
11	670006001	WASHER	1
12	671352001	WASHER, SQAURE	1
13	740628001	FIELD	1
14	630115001	RETAINING CLIP	2
15	6623704	* SCREW (M4 X 66 mm PAN HEAD)	2
16	512047002	SQUARE BASE	1
17	660279004	* SCREW (M4 X 12 mm PAN HEAD)	4
18	690190002	COLLET NUT	1
19	200214005	ARMATURE ASSEMBLY (INCL. KEY NO'S. 20, 21, 25 & 40)	1
20	690191001	BALL BEARING	1
21	690212001	RETAINING RING	1
22	940299506	HEIGHT SCALE	1
23	290075041	BRUSH ASSEMBLY	2
24	512225404	RIGHT BRUSH MOUNT	1
25	6814104	BALL BEARING (608ZZ)	1
26	560881001	RUBBER BEARING SEAT	1
27	730377012	POWER CORD	1
28	5927402	STRAIN RELIEF	1
29	512225302	CORD CLAMP	1
30	660203003	* SCREW (M3 X 12 mm PAN HEAD)	6
31	760263002	SWITCH	1
32	690214001	WRENCH	2
33	690274001	SPINDLE HANDLE	2
34	550818001	ROUTER BASE	1
35	671277001	BEARING BIT	1
36	940214076	DATA PLATE	1
37	940054106	LOGO PLATE	1
38	300912077	CARRYING CASE (NOT SHOWN)	1
39	900534001	NEOPRENE WASHER	1
40	680821001	RETAINING RING	1
	983000429	OPERATOR'S MANUAL	
	983000429R	REPAIR SHEET (REV:02)	
	6-7-05		



WIRING DIAGRAM