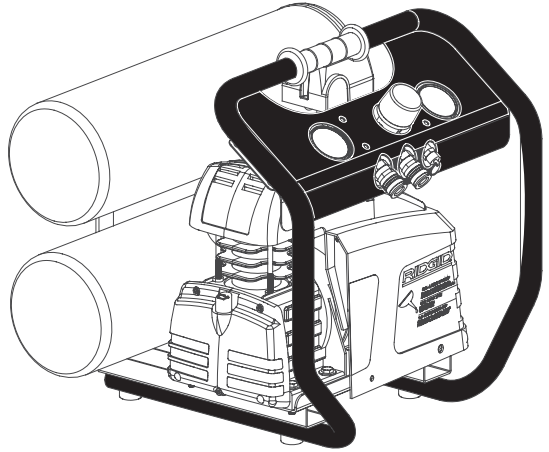


IRI[®]

**OL50135AL
OPERATOR'S MANUAL**

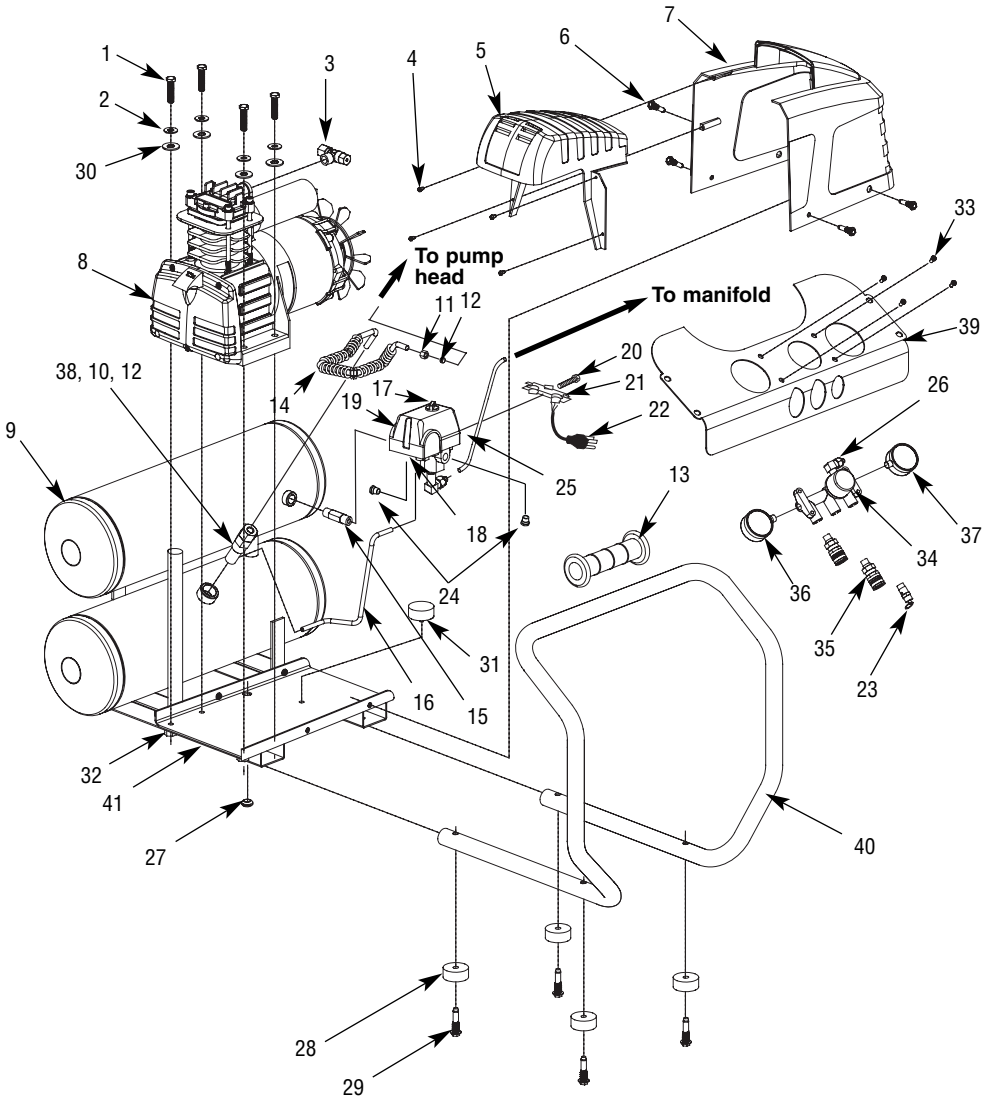


**ALUMINUM
TWIN STACK
PORTABLE AIR
COMPRESSOR**

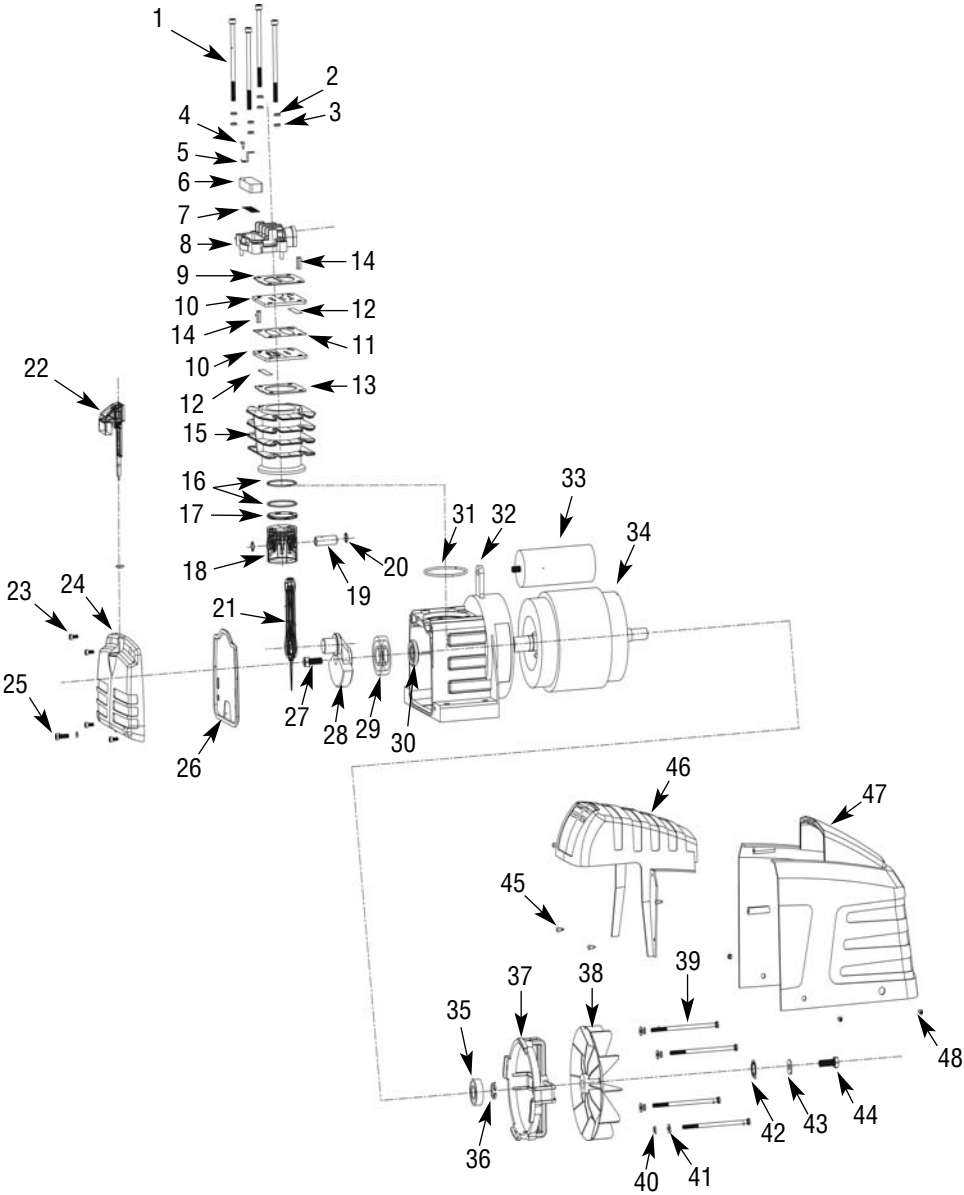
⚠WARNING:

To reduce the risk of injury, the user must read and understand the Operator's Manual before using this product.

Repair Parts



Repair Parts



Repair Parts

For Repair Parts, Call 1-800-4-RIDGID

Please provide following information:

- Model number
- Serial number (if any)
- Part description and number as shown in parts list

Ref. No.	Catalogue Number	Part Number	Description	Qty
1		▲	Socket head cap screw M6-1.25 x 110 mm - cylinder head	4
2		▲	Lock washer M6	4
3		▲	Flat washer M6	1
4		■	Self-tapping Phillips head screw 3.5 mm OD x 12 mm	1
5		■	Air filter retainer clip	1
6		■	Air filter	1
7		■	Air filter screen	1
8	25038	HL007600AV	Cylinder head	1
*9		●	Head gasket	1
10		●	Valve plate	2
*11		●	Center valve gasket	1
*12		●	Valve	2
*13		●	Cylinder gasket	1
14		●	Roll pin XC5.4 mm x 7 mm - valve plate	2
15	25043	HL007500AV	Cylinder	1
16		◆▼	Compression ring	2
17		◆▼	Oil control ring	1
18		▼	Piston	1
19		▼	Wrist pin	1
20		▼	Wrist pin retainer	2
21		▼	Connecting rod	1
22	25048	HL012000AV	Dipstick assembly with o-ring	1
23		†	Socket head cap screw M4-1.25 x 14 mm - front cover	4
24		†	Crankcase front cover	1
25	25123	HL012100AV	Oil drain with o-ring - M5-1.25 x 10 mm	1
26	25053	HL009100AV	Crankcase cover gasket	1
27		††	SHCS M8-1.25 x 25 mm L.X. thread - eccentric	1
28		††	Eccentric counter weight	1
29		††	Bearing - pump crankcase	1
30		††	Oil seal 20 mm x 35 mm x 7 mm - crankcase	1

Repair Parts (continued)

Ref. No.	Catalogue Number	Part Number	Description	Qty
31		●	Cylinder o-ring 65 mm x 2.65 mm	1
32		††	Crankcase	1
33	25058	†† HL008500AV	Motor run capacitor	1
*34		††	Motor	1
*35		††	Motor bearing	1
*36		††	Motor bearing retainer	1
37		††	Motor rear end bell frame	1
38		††	Motor fan	1
39		††	Hex head cap screw M5 - 1.25 x 11.5 mm - motor bolts	4
40		††	Flat washer M5	4
41		††	Lock washer M5	4
42		††	Lock washer serrated 14.5 x 24 mm	1
43		††	Flat washer - M8	1
44		††	Hex head cap screw M8 - 1.25 x 30 mm - fan bolt	1
45	25063	HL012800AV	Self tapping Phillips head screw 4.2 x 10 mm (screw kit)	4
46	24943	HL011100AV	Pump head shroud	1
47	24948	HL011200AV	Motor shroud	1
48	25068	HL012900AV	Self-tapping Phillips head screw M6 - 19 mm (screw kit)	4
* Considered wear items				
REPLACEMENT PARTS KITS				
▲	25073	HL011500AV	Pump cylinder bolt kit	
■	25078	HL011600AV	Filter/screen kit	
●	25083	HL011700AV	Valve plate/gasket kit	
◆	25088	HL011800AV	Ring kit	
▼	25093	HL011900AV	Piston assembly	
†	25098	HL012200AV	Crankcase cover kit	
††	25108	HL012400AV	Motor kit	
††	25113	HL012500AV	Motor fan kit	