

RIDGID

**10 in. COMPOUND MITER SAW
MODEL NO. MS1065LZA
REPAIR SHEET**

**SCIE À ONGLETS COMPOSÉS
DE 254 mm (10 po)
MODÈLE MS1065LZA
FEUILLE DE RÉPARATION**

**SIERRA INGLETEADORA COMBINADA
DE 254 mm (10 pulg.)
MODELO MS1065LZA
LISTAS DE PIEZAS DE REPUESTO**

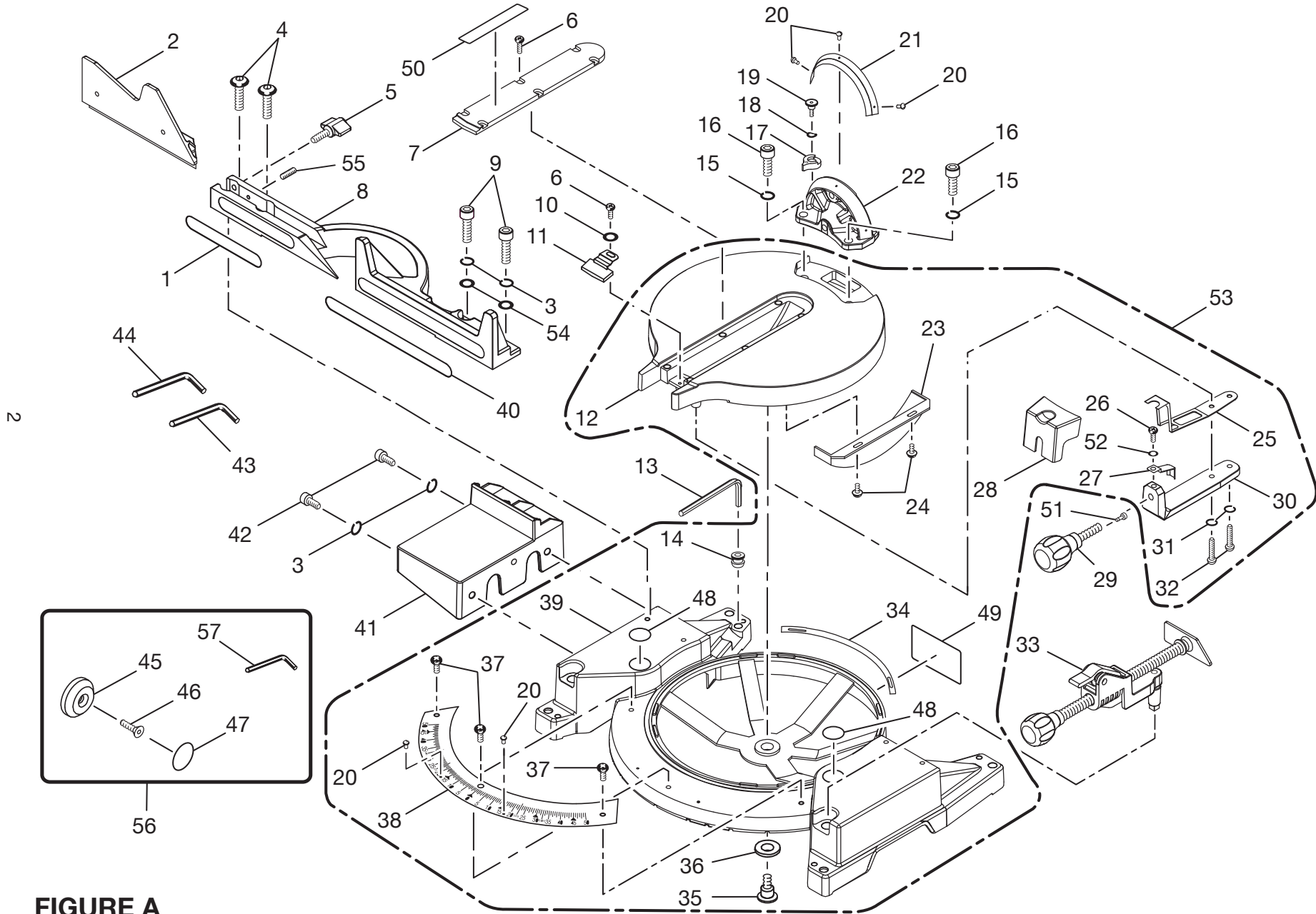


FIGURE A



MS1065LZA

PARTS LIST FOR FIGURE A

KEY	PART		KEY NO.	PART NUMBER	DESCRIPTION	QTY.
1	503120000	LABEL	32	A08007060250	SCREW (M6 x 25L)	2
2	503116100	SLIDING MITER FENCE.....	33	503A07010	WORK CLAMP ASSEMBLY	1
3	A36070814200	SPRING WASHER (M8).....	34	503103000	WEAR STRIP	2
4	A08007080250	SCREW (M8 x 25L).....	35	503111000	TABLE SPINDLE	1
5	503117000	KNOB	36	503112000	WASHER.....	1
6	A10007040100	SCREW (M4 x 10L).....	37	A10007050105	SCREW (M5 x 10L)	3
7	503114000	THROAT PLATE.....	38	503102000	MITER SCALE.....	1
8	503115100	FENCE.....	39	503101100	MITER TABLE FRAME	1
9	503122000	SCREW (M8 x 25L, SOC. HD.).....	40	503119000	LABEL.....	1
10	A35070410010	FLAT WASHER (M4).....	41	503502000	TABLE EXTENSION.....	1
11	503113000	MITER SCALE INDICATOR	42	A07007080150	SCREW (M8 x 15L SOC. HD.)	2
12	503104100	MITER TABLE.....	43	A07910610000	HEX KEY (6mm).....	1
13	503121000	HEX KEY (5mm)	44	A07910810000	HEX KEY (8mm).....	1
14	503118000	HEX KEY HOLDER.....	45	089100300722	ADJUSTABLE LASER GUIDE	1
15	A36071018250	SPRING WASHER (M10).....	46	089100300730	LASER GUIDE BOLT.....	1
16	A07007100350	SCREW (M10 x 35L, SOC. HD.).....	47	089100300727	LASER WARNING LABEL.....	1
17	080036001565	BEVEL ANGLE PIVOT	48	588072000	HAND WARNING LABEL	2
18	A63020000040	O-RING.....	49	089036003901	DATA LABEL	1
19	503210000	FIXED SCREW.....	50	503125000	INSERT WARNING LABEL.....	1
20	A49010020056	RIVET (2.5 x 5L).....	51	503124000	PUSH TIP.....	1
21	503207000	BEVEL SCALE.....	52	A35070511150	FLAT WASHER.....	1
22	503202000	BEVEL PIVOT BRACKET.....	53	S50300400	MITER TABLE ASSEMBLY	1
23	503106000	TABLE HOLD DOWN.....	54	A35070816150	FLAT WASHER.....	2
24	A19007040090	SCREW (M4 x 9L).....	55	A18007040150	FIXED SCREW (M4 x 15L)	1
25	503107000	LOCK PLATE	56	089100300718	ADJUSTABLE LASER KIT (INC. KEY NOS. 45, 46, 47, 57, 58 AND 59)...	1
26	A10007050080	SCREW (M5 x 8L)	57	089100300726	HEX KEY (1/16 in.).....	1
27	503109000	SPRING PLATE	58	089100300728	INSTRUCTION SHEET (NOT SHOWN).....	1
28	503108000	SLEEVE	59	089100300729	CARD (NOT SHOWN)	1
29	503105000	TABLE LOCK KNOB.....				
30	503110000	CONTROL ARM				
31	A36070612150	SPRING WASHER (M6).....				

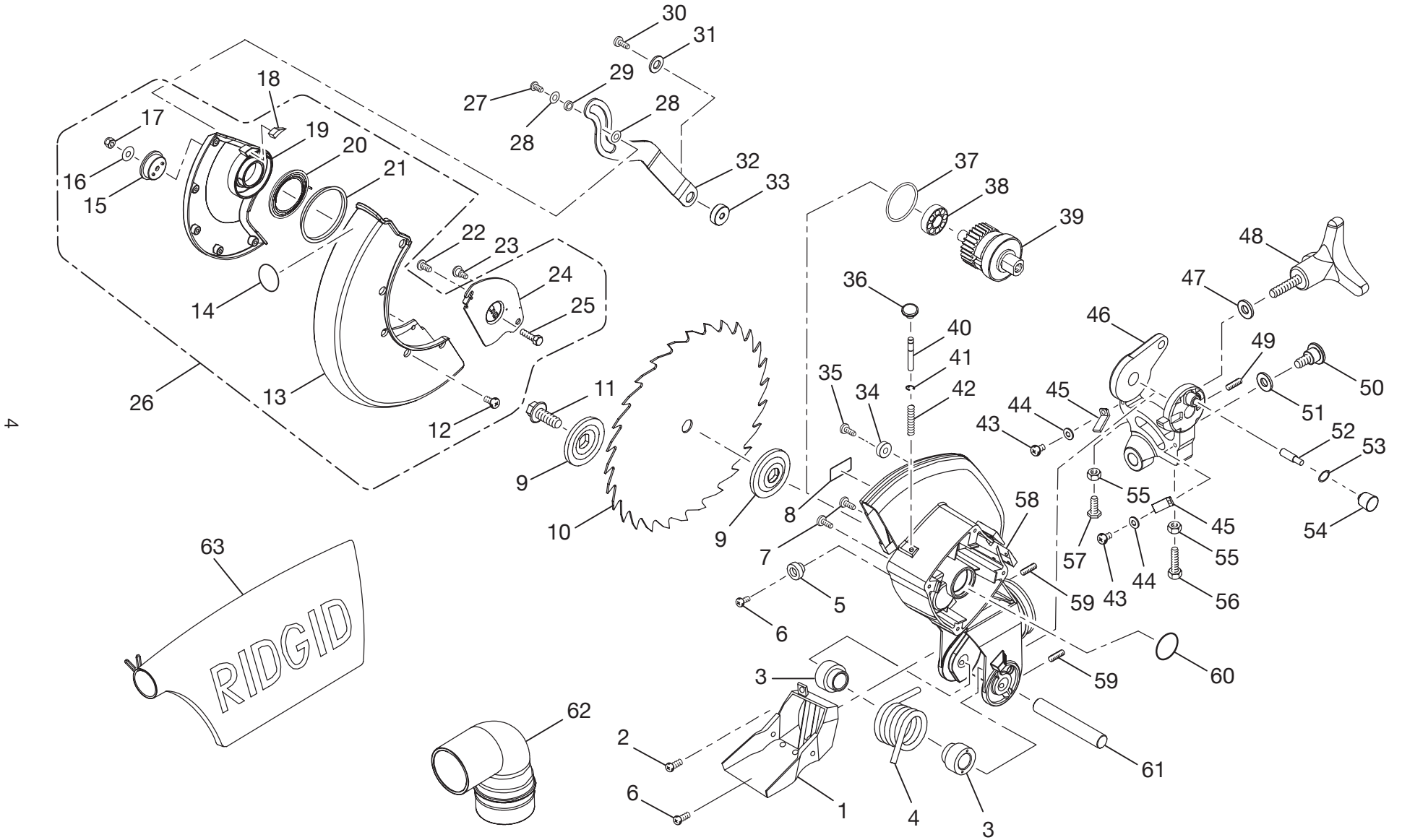


FIGURE B



MS1065LZA

PARTS LIST FOR FIGURE B

KEY NO.	PART NUMBER	DESCRIPTION	QTY.	KEY NO.	PART NUMBER	DESCRIPTION	QTY.
1	503320100	DUST CHUTE	1	33	503411000	LINK WASHER.....	1
2	A16007050050	SCREW (M5 x 5L).....	1	34	503304000	ROLLER	1
3	538327000	SPACER	2	35	503305000	SCREW	1
4	503319000	TORSION SPRING	1	36	503303000	SPINDLE KNOB (CAP).....	1
5	503306000	RUBBER SLEEVE.....	1	37	A63020000428	O-RING	1
6	A19007050120	SCREW (M5 x 10L)	2	38	A50060000027	BALL BEARING	1
7	588031004	FIXED SCREW.....	2	39	503A04010	ARBOR SHAFT ASSEMBLY (INC. 38)	1
8	503329000	UPPER ARM WARNING LABEL	1	40	503302000	SPINDLE LOCK PIN	1
9	588035105	FLANGE	2	41	A47000040006	E-RING	1
10	503501000	BLADE.....	1	42	588027005	COMPRESSION SPRING	1
11	503412000	SCREW	1	43	A10007040100	SCREW (M4 x 10L)	2
12	503402000	T-SCREW	5	44	A35070406010	FLAT WASHER (M4).....	2
13	503401000	LOWER GUARD	1	45	503204000	INDICATOR	2
14	588072000	HAND WARNING LABEL	1	46	503201000	SUPPORT BRACKET	1
15	503407000	SPACER	1	47	A35071025150	FLAT WASHER (M10).....	1
16	A35070619150	FLAT WASHER (M6)	1	48	503203000	BEVEL LOCK KNOB.....	1
17	A31707006000	LOCK NUT (M6)	1	49	A18003040080	FIXED SCREW (M4 x 8L)	1
18	503414000	SPONGE	1	50	503208000	PIVOT SHAFT	1
19	503403100	GUARD PLATE	1	51	589011308	WASHER.....	1
20	503406000	TENSION SPRING.....	1	52	503205000	STOP PIN.....	1
21	503413000	INNER PAD.....	1	53	A63000000062	O-RING	1
22	A19007050090	SCREW (M5 x 9L).....	1	54	503206000	SPINDLE KNOB (CAP).....	1
23	503405000	SCREW	1	55	A30007006360	NUT (M6).....	2
24	503404100	BLADE BOLT COVER.....	1	56	A01007060160	BOLT (M6 x M16 HEX HD.).....	1
25	503415000	BOLT	1	57	503415000	BOLT	1
26	S50300300	LOWER GUARD ASSEMBLY	1	58	503301100	ARM	1
27	A10007050156	SCREW (M5 x 15L).....	1	59	A18007060150	FIXED SCREW (M6 x 15L)	2
28	503410000	WASHER	2	60	A63020000320	O-RING	1
29	A50010500020	BALL BEARING	1	61	503321000	SHAFT.....	1
30	A10007060200	SCREW (M6 x 20L).....	1	62	503503000	DUST GUIDE	1
31	A35070619150	FLAT WASHER (M6)	1	63	503512000	DUST BAG.....	1
32	503408000	LINK ASSEMBLY.....	1				

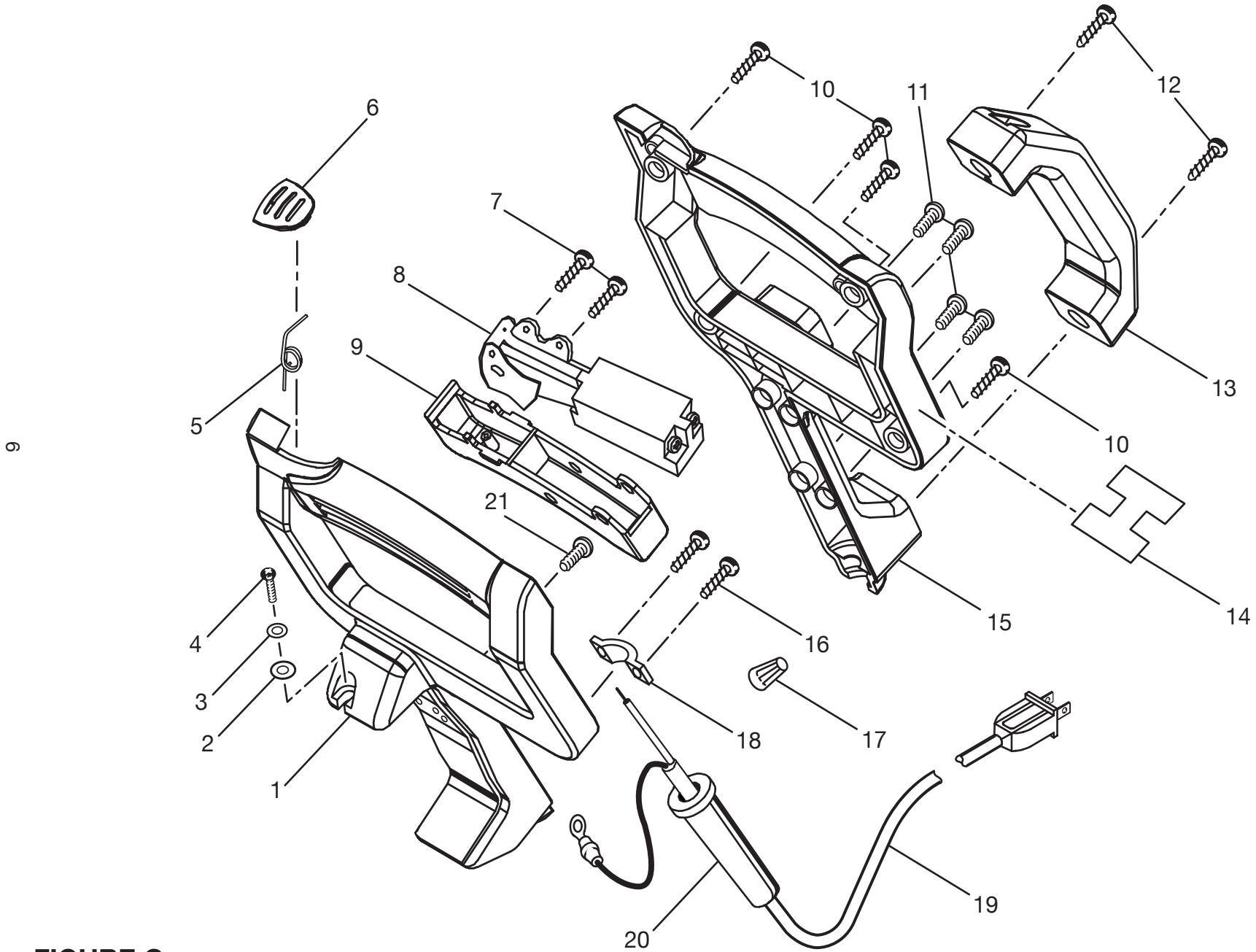


FIGURE C

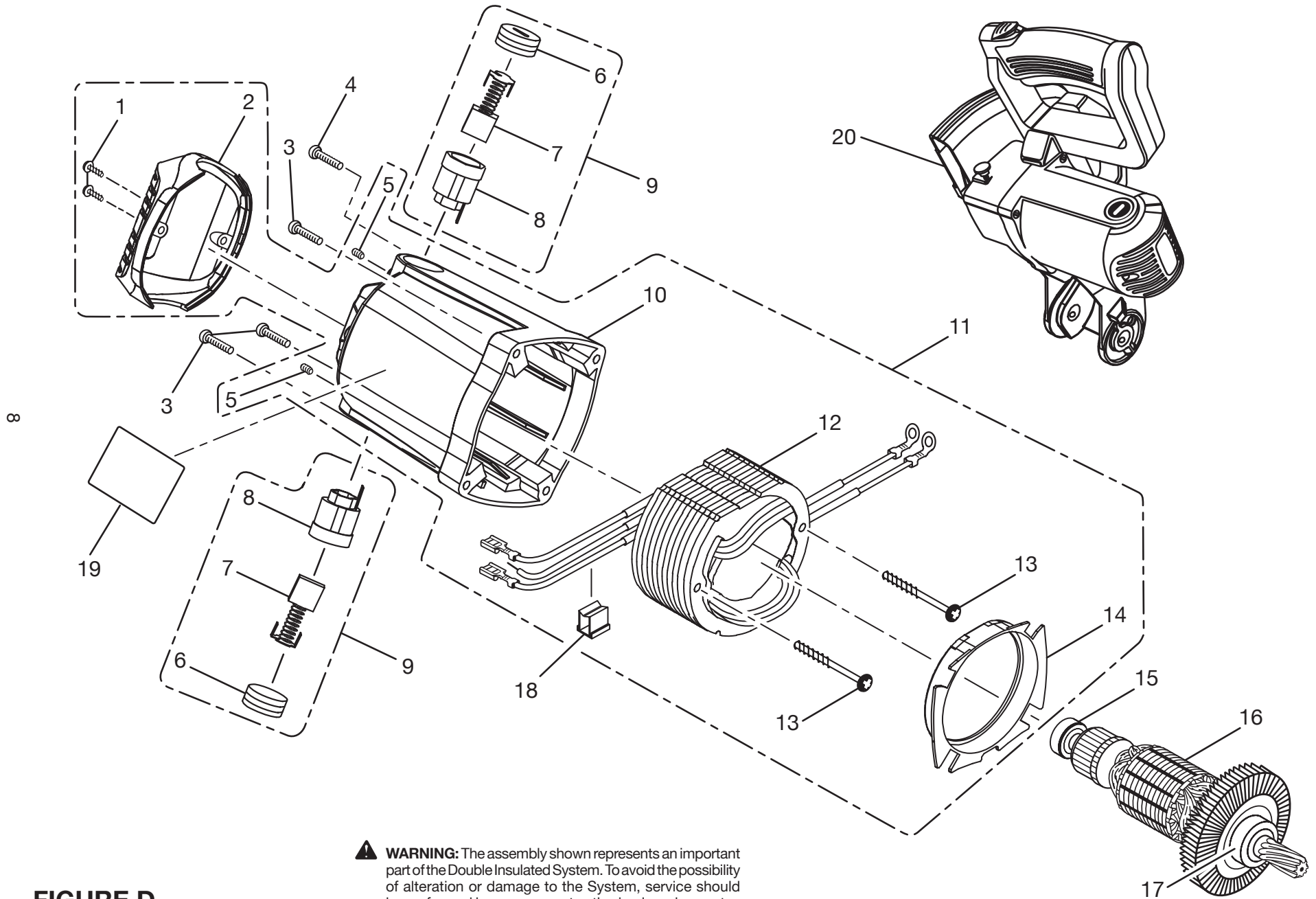


MS1065LZA

PARTS LIST FOR FIGURE C

KEY NO.	PART NUMBER	DESCRIPTION	QTY.	KEY NO.	PART NUMBER	DESCRIPTION	QTY.
1	503311000	LOWER HANDLE	1	12	A29007050200	SCREW (M5 x 20L).....	2
2	A35070410010	FLAT WASHER (M4).....	1	13	503315000	CARRYING HANDLE.....	1
3	A36070407010	SPRING WASHER (M4).....	1	14	503326000	WARNING LABEL	1
4	A10007040120	SCREW (M4 x 12L).....	1	15	503310000	UPPER HANDLE	1
5	503316000	SPRING.....	1	16	A90007040120	SCREW (M4 x 12L).....	2
6	503314000	SAFETY BUTTON	1	17	503324000	ELECTRICAL NUT.....	1
7	A29007040080	SCREW (M4 x 8L).....	2	18	578313006	CORD CLAMP.....	1
8	503317000	SWITCH	1	19	503318000	POWER CORD.....	1
9	503313000	TRIGGER.....	1	20	588004100	CORD BEND RELIEF	1
10	A29007040140	SCREW (M4 x 14L).....	4	21	A10007050083	SCREW (M5 x 8L).....	1
11	A19007050180	SCREW (M5 x 18L).....	4				

7



⚠ WARNING: The assembly shown represents an important part of the Double Insulated System. To avoid the possibility of alteration or damage to the System, service should be performed by your nearest authorized service center.

FIGURE D



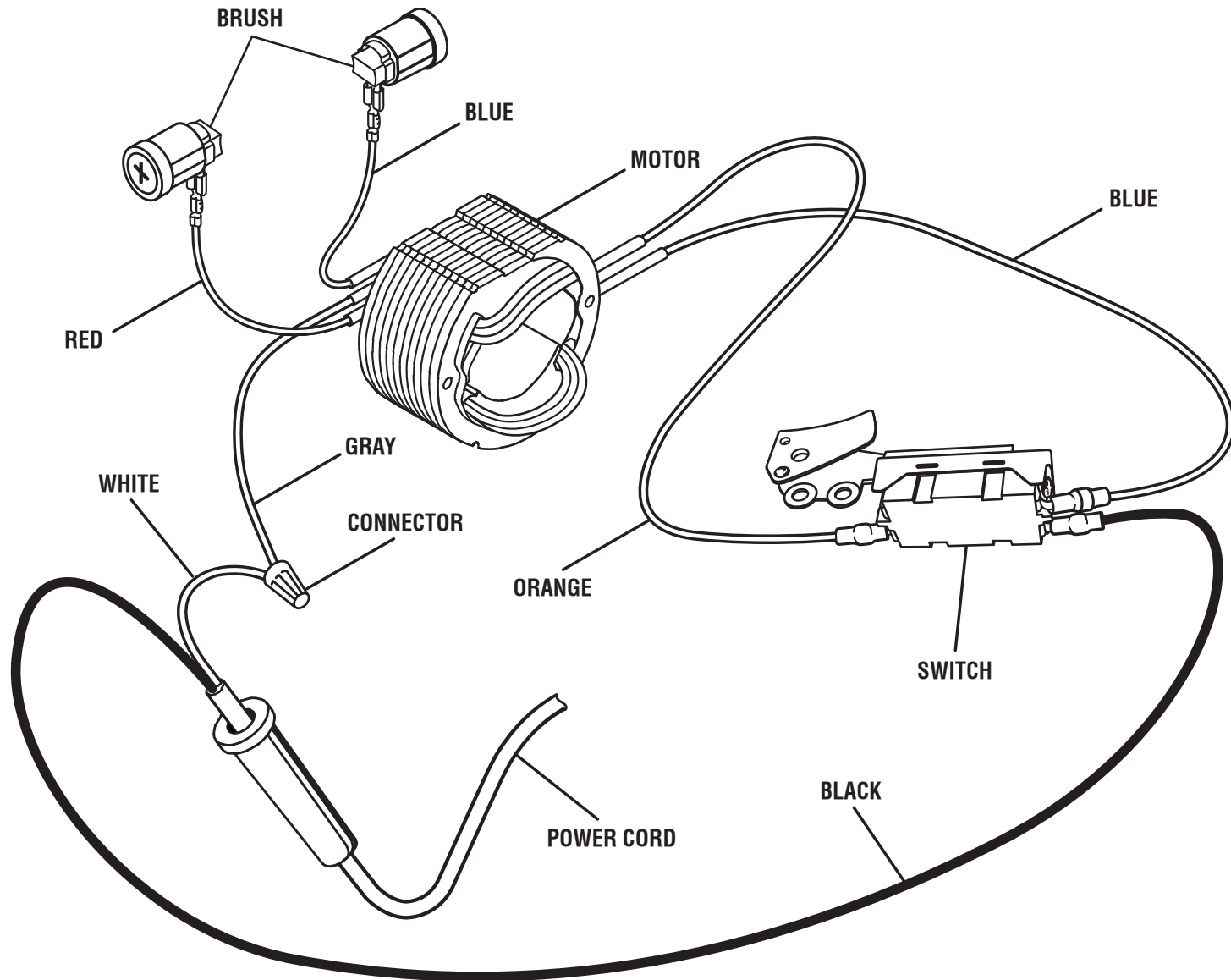
MS1065LZA

PARTS LIST FOR FIGURE D

KEY NO.	PART NUMBER	DESCRIPTION	QTY.
1	A29007040080	SCREW (M4 x 8L)	2
2	503309000	END CAP	1
3	A19007050250	SCREW (M5 x 25L).....	3
4	A19007050200	SCREW (M5 x 20L).....	1
5	A18007050080	FIXED SCREW (M5 x 8L).....	2
6	588005105	BRUSH CAP	2
7	588006100	BRUSH	2
8	588007300	BRUSH HOLDER	2
9	089036003700	BRUSH ASSEMBLY	2
10	503308000	MOTOR HOUSING.....	1

6

KEY NO.	PART NUMBER	DESCRIPTION	QTY.
11	S50300500	MOTOR HOUSING ASSEMBLY	1
12	9053D02000	FIELD ASSEMBLY	1
13	A90107050600	SCREW (M5 x 60L).....	2
14	503312000	FAN CASING	1
15	A50060020056	BALL BEARING	1
16	9053C01000	ARMATURE ASSEMBLY (INC. # 15 & 17)	1
17	A50006080049	BALL BEARING.....	1
18	503323000	LEAD SLEEVE	1
19	503328000	WARNING LABEL	1
20	S50300200	MOTOR ASSEMBLY.....	1
	987000015	OPERATOR'S MANUAL	



WIRING DIAGRAM