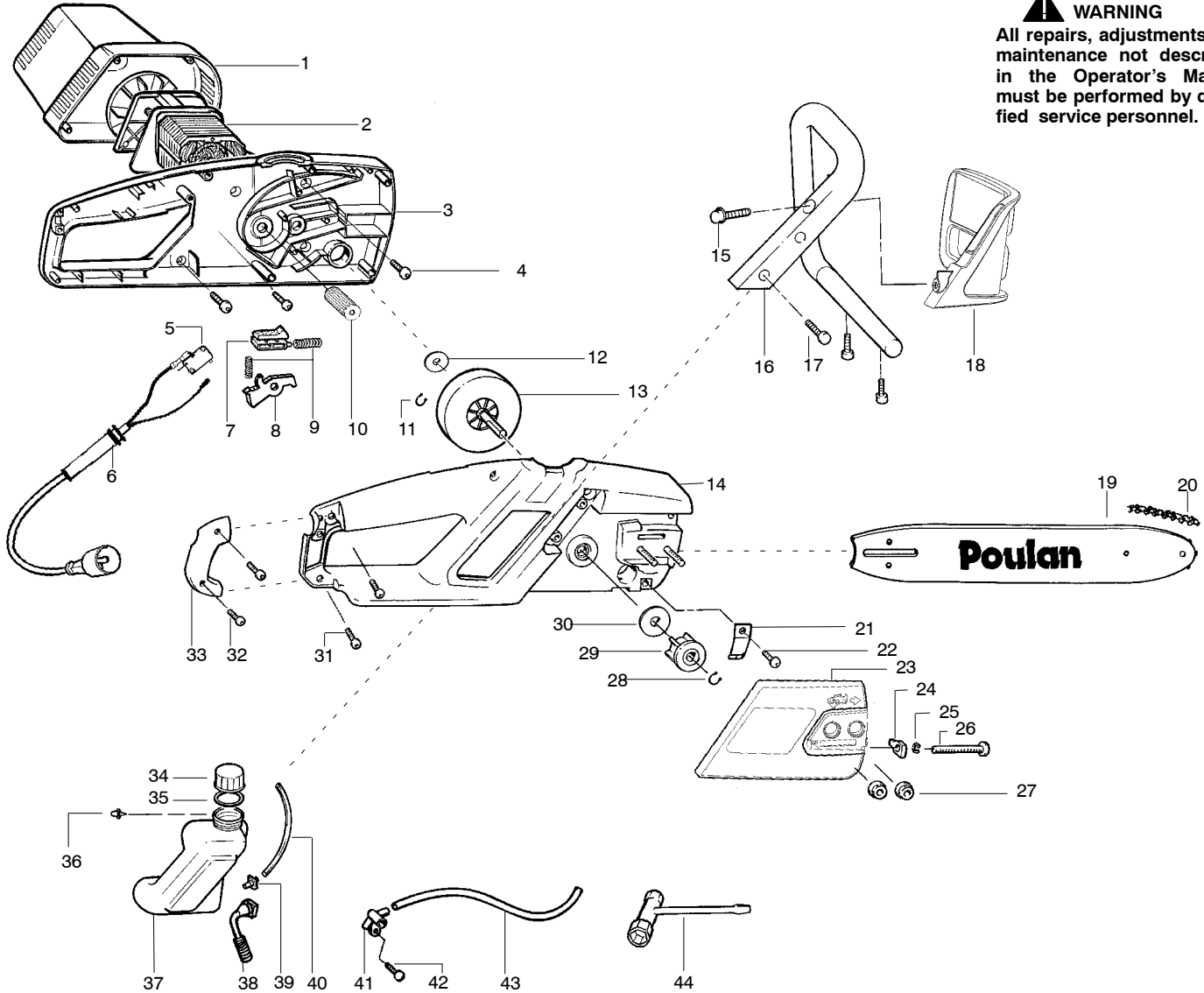


⚠ WARNING

All repairs, adjustments and maintenance not described in the Operator's Manual must be performed by qualified service personnel.



Ref.	Part No.	Description	Ref.	Part No.	Description
1.	530403211	Motor Cover	26.	530016265	Screw-Bar Adjust
2.	530404233	Motor Outline	27.	530015917	Nut-Bar Mounting
3.	530404200	Assy-Housing	28.	530042090	Ring-Retainer
4.	530015814	Screw	29.	530053053	Sprocket (3/8 Pitch)
5.	530402879	Switch-Momentary	30.	530016262	Washer-Sprocket
6.	530404254	Assy-Harness (Incl. # 5)	31.	530015775	Screw
7.	530053179	Lockout Button	32.	530015814	Screw
8.	530053181	Trigger	33.	530403217	Cover Access
9.	530042091	Spring-Trigger	34.	530053072	Oil Cap
10.	530053067	Pinion	35.	530019136	O-Ring (Oil Cap)
11.	530042090	Ring-Retainer	36.	530026119	Check Valve (Duckbill)
12.	530016278	Washer-Thrust	37.	530053248	Oil Tank Ass'y. (Incl. 34,35,36, 38,39,40)
13.	530053048	Gear Drive	38.	530047663	Oil Pickup Ass'y.
14.	530053061	Housing Cover	39.	530053270	Oil Pickup Fitting
15.	530016406	Screw	40.	530403393	Inlet Line
16.	530403237	Front Handle	41.	530403311	Oil Pump Ass'y.
17.	530015814	Screw	42.	530015775	Screw
18.	530403313	Handguard	43.	530403394	Outlet Line
19.	952044370	Bar-16"	44.	530031163	Bar Wrench
20.	952051211	Chain-16"			
21.	530029850	Chain Catcher			Not Shown
22.	530015940	Screw			
23.	530053153	Bar Clamp	545146939		Operator Manual
24.	530053068	Pin-Bar Adjust	530029543		Scabbard
25.	530024419	Retainer-Bar Adjust	530053853		Decal-Warning