



# MK-1600 SERIES

**Concrete Saw  
Owner's Manual  
Parts List & Operating Instructions**

**1600 SERIES MODELS  
1613H, 1612K Premium  
1613H, 1612K Standard  
1608H Premium  
1608H Standard**

## TABLE OF CONTENTS

<b>General Safety Instructions</b>	<b>2-3</b>
Safety Messages	2
Hazard Symbols	2-3
Damage Prevention Messages	3
<b>Saw Features</b>	<b>4</b>
Blade Drive System	4
Depth Indicator & Hour Meter	4
Water System	4
<b>Unpacking and Preparation</b>	<b>4-5</b>
<b>Initial Servicing</b>	<b>5</b>
Engine Preparation	5
Add Oil	5
Add Fuel	5
Mounting the Blade	5
Front Pointer Alignment	5
<b>Sawing Operations</b>	<b>6-9</b>
Description of Controls	6
Determination of Sawing Hazards	6
Operation in Enclosed Areas	6
Engine Starting Procedures	6
Pre Start Checklist	6
Maneuvering the Saw	7
Wet Cutting	7
Dry Cutting	7
Aligning the Saw with a Marked Line	7
Starting a Cut	7
Sawing a Straight Line	8
Finishing a Cut	8
Cutting with the Blade on the Left Side	8
Blade Speed and Throttle Setting	8
<b>Maintenance:</b>	<b>9-11</b>
Maintenance Schedule	9
Cleaning	10
Engine	10
Grease Points	10
Controls	10
V-belts	10
Depth Control	11
Water System	11
<b>Trouble Shooting</b>	<b>11</b>
<b>Service Record</b>	<b>11</b>
<b>Exploded View</b>	<b>12-13</b>
<b>Parts Listing</b>	<b>14-17</b>

Please record the serial number (Located on the cover post casting) of your saw in this block.

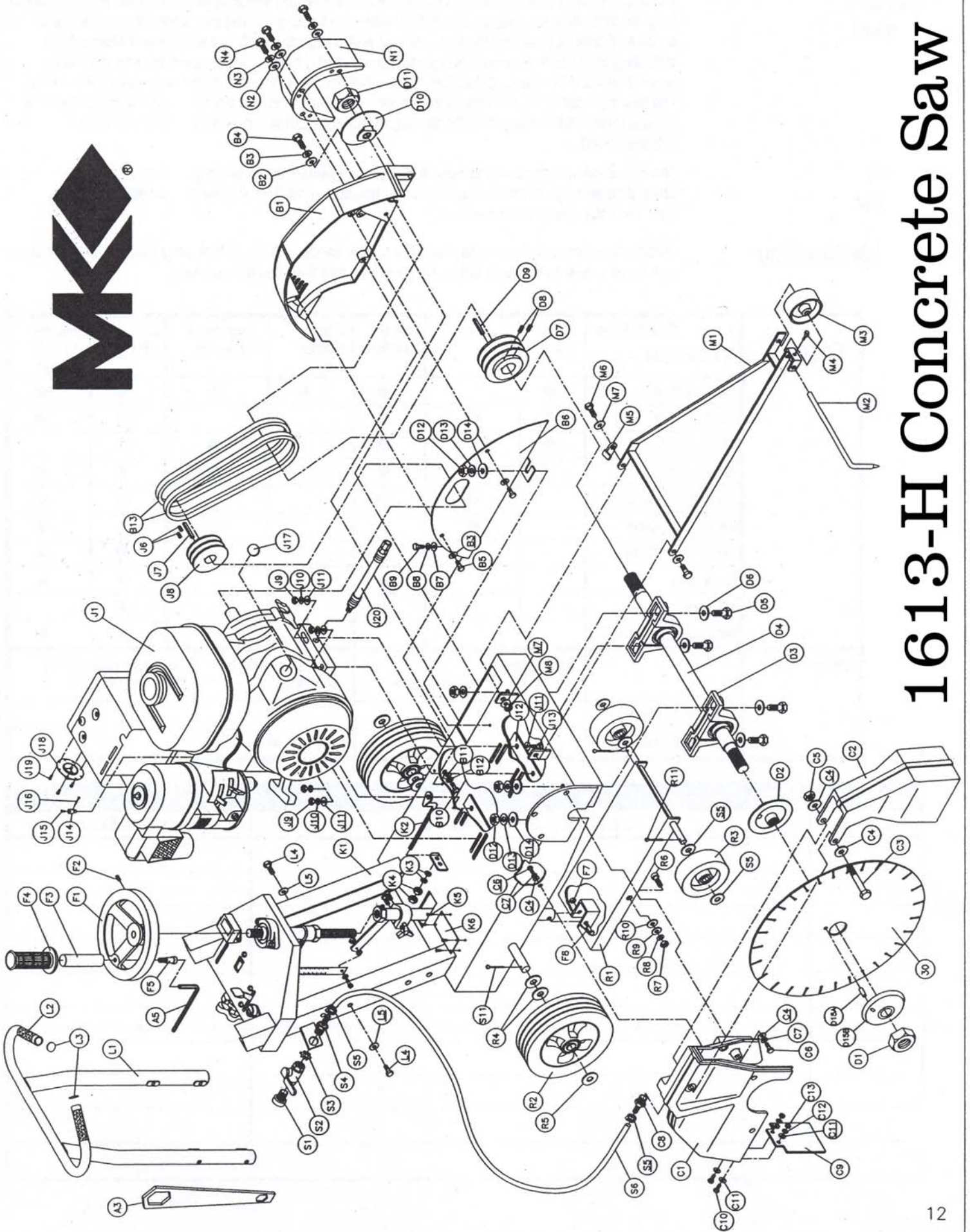
serial number

For your warranty to be effective, complete the warranty card (include the serial number) and mail it in as soon as possible.

Manual Part No. 157841 Revision 5/00 U.S.A.

### WARNING

- For your own safety read instruction manual before operating saw.
- Wear eye protection.
- Disconnect saw before servicing, when changing cutting wheels, and cleaning.
- Replace damaged cutting wheel before operating.



# 1613-H Concrete Saw



## Parts List

Standard Models: MK-1613-H / MK-1612-K / MK-1608-H

Optional Items: Lifting Bale, Water Tank

Item	Description	Qty	MK p/n
A1	Owner's Manual MK-1600 Series Concrete Saw (not shown)	1	157841
A2	Warranty Card (not shown)	1	155859
A3	Wrench	1	137976
A4	Key, 1/4 Hex	1	156235
B1	Belt Guard	1	157704
B2	Washer, 5/16 SAE Flat	3	151754
B3	Washer, 5/16 Split Lock	3	151747
B4	Screw, 5/16-18 X 1 Hex Head Cap	1	152743
B5	Screw, 5/16-18 X 3/4 Hex Head Cap	2	151369
B6	Back Plate, Belt Guard	1	157705
B7	Washer, 1/4 SAE Flat	1	151915
B8	Washer, 1/4 split lock	1	152591
B9	Screw, 1/4-20 X 1/2 Hex Head Cap	1	152608
B10	Screw, 3/8-16 X 3/4 Hex Head Cap	1	153527
B11	Washer, 3/8 SAE Flat	1	150923
B12	Washer, 3/8 Split Lock	1	150925
B13	V-Belt, AX26	2	152365
B14	Label, Caution, Belt Tension, 1.5 X 3.0	1	155583
B15	Label, Caution, Guards in Place, 1.5X3.0	1	155587
B16	Label, Caution, Sparkplug	1	155579
C1	Blade Guard, 16" Rear	1	151345
C2	Blade Guard, 16" Front	1	151346
C3	Screw, 3/8-16 X 4 Hex Head Cap	1	153531
C4	Washer, 3/8 SAE Flat	6	150923
C5	Nut, 3/8-16 Nylock Hex	1	152505
C6	Screw, 3/8-16 X 1 Hex Head Cap	4	152507
C7	Washer, 3/8 Split Lock	4	150925
C8	Fitting, Brass, 1/8 MNPT X BARB	1	152501
C9	Flap, Rubber Splash	1	150846
C10	Screw, 1/4-20 X 1/2 Hex Head Cap	2	152608
C11	Washer, 1/4 SAE Flat	4	151915
C12	Washer, 1/4 Split Lock	2	152591
C13	Nut, 1/4-20 Hex	2	151893
C14	Label, Caution, Lift Guard, 1.5 X 3.0	1	155586
C15	Label, Blade Failure Warning	1	155588
D1	Nut, Blade Shaft, 3/4-16 Left Hand	1	155069
D2	Flange, Inner, Left Hand	1	155068
D3	Bearing, 1" Pillow Block	2	155072
D4	Blade Shaft, Premium	1	157842
D5	Screw, 7/16-14 X 1 1/2 Hex Head Cap	4	155155
D6	Washer, 1/2 SAE Flat	4	150924
D7	Pulley, 2 Groove, 3 1/4 X 1	1	155149
D8	Screw, 5/16-18 X 1/4 Socket Head Set	2	152607
D9	Key, Square, 1/4 X 1/4 x 1 3/4	1	150796

D10	Flange, Inner, Right Hand	1	157843
D11	Nut, Blade Shaft, 3/4-16 Right Hand	1	157844
D12	Nut, 7/16-14 Hex	4	150922
D13	Washer, 7/16 Split Lock	4	151051
D14	Washer, 7/16 SAE Flat	2	151050
D15A	Pin, 3/8 X 1 Type "A" Groove	1	152207
D15B	Flange, Outer	1	150732
F1	Depth Control Wheel	1	155156
F2	Screw, 3/8-16 X 1/2 Socket Head Set	1	153710
F3	Handle, Depth Control Wheel	1	156236
F4	Handgrip	1	150842
F5	Screw, 1/2 X 3/4 Socket Head Shoulder, w/ 3/8-16 X 5/8 Thread	1	156177
F6	Depth Control Tube	1	155049
F6A	Fitting, Grease (zerk)	1	153852
F7	Nut, 3/8-16 Nylock Hex	1	152505
F8	Screw, 3/8-16 X 2 Hex Head Cap	1	153485
F9	Bearing, Flange, w/ zerk fitting	1	155151
F10	Screw, 3/8-16 X 1 1/4 Hex Head Cap	2	150774
F11	Nut, 3/8-16 Nylock Hex	2	152505
F12	Spacer, Depth Control	1	155161
F13	Nut, 3/4-10 Hex	1	155063
F14	Screw, Depth Control	1	155062
G1	Screw, 1/4-20 X 1/2 Pan Head Phillips Cap	3	155452
G2	Bracket, Depth Indicator	1	156608
G3	Nut, 1/4-20 Hex	1	151893
G4	Arm, Depth Indicator	1	156604
G5	Washer, 1/4 split lock	2	152591
G6	Clamp, Depth Indicator	1	156603
G7	Washer, 5/16 SAE Flat	1	151754
G8	Knob, Davies	1	151681
G9	Screw, 8-32 X 1/2 Pan Head Phillips Cap	1	152517
G10	Washer, #8 SAE Flat	2	155454
G11	Nut, 8-32 Hex	1	153549
G12	Spring, Depth Indicator	1	156605
G13	Spool, 1.0 Depth Indicator	1	157845
G14	Screw, 1/4-20 X 1 1/2 Hex Head Cap	1	151914
G15	Washer, 1/4 SAE Flat	1	151915
H1	Lock, 8-7/8 Depth Control	1	157846
H2	Knob, Depth Lock	1	155845
H3	Thrust Washer	1	155238
H4	Nut, 3/8-16 Nylock Hex	1	152505
J1	Engine, Honda GX390 13HP w/ Cyclone Air Filter	1	155365
JA1	Engine, Kohler Command Pro CS 12 hp (not shown)	1	157831
JB1	Engine, Honda 8HP w/ Cyclone Air Filter	1	155133
J2	Label, Caution, Hot Surface, 1.5 X 3.0	1	155578
J3	Label, Warning, Refueling, 1.5 X 3.0	1	155580
J4	Label, Danger, California, 1.5 X 3.0	1	155581
J5	Label, Danger, Lethal Exhaust, 1.5 X 3.0	1	155582
J6	Screw, 5/16-18 X 1/4 Socket Head Set	2	152607
J7	Key, Square, 1/4 X 1/4 x 1 3/4	1	150796

J8	Pulley, 2 Groove, 3 1/4 X 1	1	155149
J9	Nut, 3/8-16 Hex	4	101188
J10	Washer, 3/8 Split Lock	4	150925
J11	Washer, 3/8 SAE Flat	7	150923
J12	Plate, Engine Bolt	2	157847
J13	Screw, 3/8-16 X 2 Hex Head Cap	4	153485
J14	Pin, Throttle Control	1	151284
J15	Screw, 8-32 X 3/8 Pan Head Cap	1	156614
J16	Pin, Cotter, 1/16 X 3/4	1	152518
J17	Plug, Plastic, 3/4 Round	1	156615
J18	Deflector, Honda 11/13HP	1	155375
J19	Screw, 6-32 X 1/2 Pan Head Phillips Self-tapping Cap	3	153466
J20	Oil Drain, M12-1.5 (sub-assembly)	1	157577-02
<b>K1</b>	Frame	1	157836
K2	Arm, Tension	1	157848
K3	Washer, 5/16 SAE Flat	2	151754
K4	Nut, 5/16-18 Hex	2	101196
K5	Screw, #7 X 5/16, Drive, Round Head	4	157849
K6	Plate, Serial Number	1	156547
K7	Label, Console	1	157850
K8	Label, Depth Lock, 1.04 X 3.25	1	155577
K9	Label, Operating Instructions, 3.5 X 6.0	1	155584
K10	Label, Caution, Hands and Feet, 2.0 X 4.0	1	155585
<b>L1</b>	Handlebar	1	157744
L2	Handgrip, Neoprene	2	157855
L3	Handlebar Plugs	2	156615
L4	Screw, 3/8-16 X 2 Hex Head Cap	2	153485
L5	Washer, 3/8 SAE Flat	4	150923
<b>M1</b>	Pointer Arm	1	156544
M2	Pointer	1	155057
M3	Wheel, Pointer	1	155066
M4	Screw, 1/4-20 X 3/4 Thumb	2	150991
M5	Stop Clip	1	157837
M6	Screw, 3/8-16 X 1 1/2 Hex Head Cap	2	153528
M7	Washer, 3/8 SAE Flat	4	150923
M8	Nut, 3/8-16 Nylock Hex	2	152505
<b>N1</b>	Shaft Guard	1	156307
N2	Washer, 3/8 SAE Flat	3	150923
N3	Washer, 3/8 Split Lock	3	150925
N4	Screw, 3/8-16 X 1 Hex Head Cap	3	152507
N5	Label, Caution, Guards in Place, 1.5X3.0	1	155587
<b>P1</b>	Tach / Hourmeter	1	153877
P2	Screw, 8-32 X 1/2 Pan Head Phillips Self-Tapping Cap	2	156632
P3	Wire Harness, Premium, Honda (not shown)	1	156633
P4	Switch, Engine On/Off	1	157851
<b>Q1</b>	Screw, 10-24 X 1/2 Pan Head Phillips Cap	2	151744
Q2	Nut, 10-24 Clip	2	155407
Q3	Assembly, Throttle Head	1	155406
Q4	Cable, Throttle, Honda	1	154158
<b>R1</b>	Truck	1	155048

R2	Rear Wheel	2	155986
R3	Front Wheel	2	150830
R4	Washer, 3/4 SAE Flat	4	153523
R5	Washer, 3/4 Shim	6	153699
R6	Screw, 1/2 X 1/2 Socket Head Shoulder, w/ 3/8-16 X 5/8 Thread	2	151753
R7	Nut, 3/8-16 Hex	2	101188
R8	Washer, 3/8 Split Lock	2	150925
R9	Washer, 3/8 SAE Flat	3	150923
R10	Washer, 1/2 SAE Flat	2	150924
R11	Pin, Cotter, 1/8 X 1 1/2	4	153861
<b>S</b>	<b>Assembly, Water Valve</b>	<b>1</b>	<b>155458</b>
S1	Fitting, Brass, 1/2 MNPT X Garden Hose Swivel	1	151322
S2	Valve, Shut-Off, 1/2 FNPT X 1/2 FNPT	1	150843
S3	Nut, 1/2 NPT	1	152729
S4	Fitting, Brass, 1/2 MNPT X 3/8 BARB	1	153653
S5	Hose Clamp, 5/8	2	151198
S6	Hose, 3/8 ID Vinyl	30"	150845
<b>T</b>	<b>Assembly, Lifting Bale (premium only)</b>	<b>1</b>	<b>157853</b>
T1	Lifting Bale	1	157745
T2	Screw, 1/2-13 X 1 1/4 Hex Head Cap	4	153532
T3	Washer, 1/2 Split Lock	4	153524
T4	Washer, 1/2 SAE Flat	8	150924
T5	Nut, 1/2-13 Hex	4	151282
<b>U</b>	<b>Assembly, Water Tank (optional)</b>	<b>1</b>	<b>157852</b>
U1	Water Tank	1	156644
U2	Cap	1	156956
U3	Valve, Shut Off	1	152075
U4	Elbow, 90°	1	152074
U5	Fitting	1	152076
U6	Tee, 3/8 Hose Barb, Brass	1	156646
U7	Hose, 3/8 I.D. Vinyl	2'	150845
U8	Hose Clamp, 3/8	4	151198

rev: initial release