



SteamVac

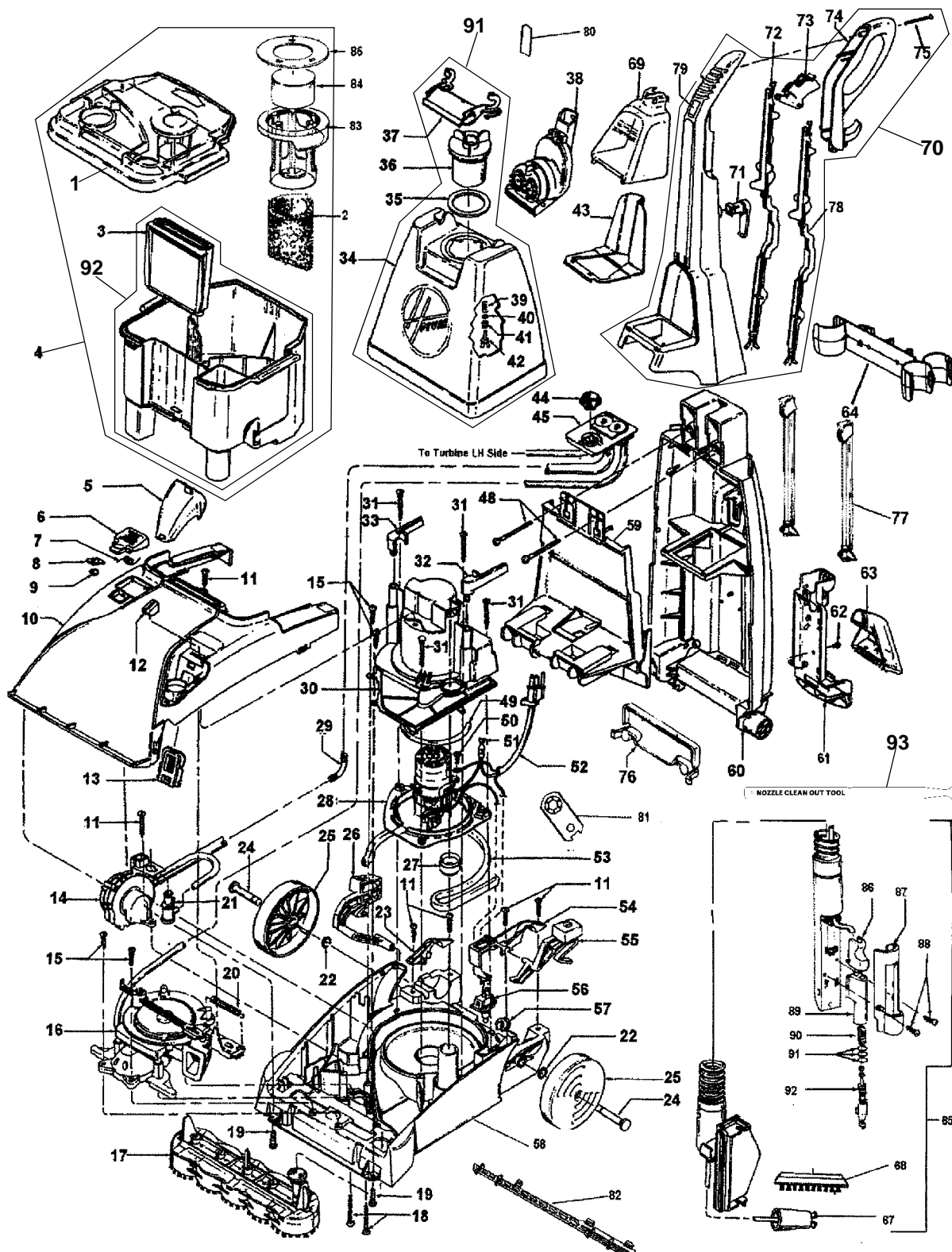
SpinScrub  
The Multiple Brush System only from Hoover



SteamVac  
with  
CLEAN  
SURGE™

15

ASSEMBLY SCHEMATIC



MODEL NO.

- F5914-900
- F5915-900
- F5917-900
- F5918-900
- FH50045



SteamVac

SpinScrub  
The Multiple Brush System only from Hoover



SteamVac  
with  
CLEAN  
SURGE™

15

**PART LISTING / PRICE LIST**

ITEM	PART NUMBER	MODELS TO FIT	PART DESCRIPTION	LIST COST
1	42272111	ALL	RECOVERY TANK LID WITH FILTER	34.01
2	90001398	ALL	TANK FILTER	4.19
3	38661004	ALL	DUCT <b>ORDER 38777106</b>	N.L.A.
4	38777081	F5914900, F5918900, F5915900, F5917900	RECOVERY TANK COMPLETE WITH LID ASSEMBLY - REVISED DUCT	49.67
5	39383106	ALL	LENS	2.82
6	37257307	F5914900	HOSE ACCESS DOOR - PATRIOT BLUE	3.39
	37257321	F5915900	HOSE ACCESS DOOR - BERMUDA BLUE	N.A.
	37257297	F5917900, FH50045	HOSE ACCESS DOOR - BLACK	3.39
	37257326	F5918900	HOSE ACCESS DOOR - WINTER GREEN	N.A.
7	38351017	ALL	ACCESS DOOR SPRING	1.12
8	38783021	ALL	SEAL	1.54
9		ALL	SPEED NUT	N.A.
10	37271110	F5914900	NOZZLE / HOOD - PATRIOT BLUE	31.04
	37271143	F5915900	NOZZLE / HOOD - BERMUDA BLUE	31.17
	37271136	F5917900, FH50045	NOZZLE / HOOD - BLACK	24.50
	37271167	F5918900	NOZZLE / HOOD - WINTER GREEN	N.A.
11	21447020	ALL	SCREW	.57
12	38421127	ALL	INDICATOR KNOB	.88
13	43613009	ALL	SCREEN ASSEMBLY	2.59
14	43582018	ALL	PUMP ASSEMBLY COMPLETE	16.43
15	21447217	ALL	SCREW - SELF TAPPING	1.12
16	43191021	ALL	TURBINE AND GEAR ASSMBLY - 5 BRUSH	34.01
17	48437022	ALL	BRUSH BLOCK - 5 BRUSH	27.21
18	21479438	ALL	SCREW	1.12
19	21447072	ALL	SCREW	.57
20	38333009	ALL	SPRING	1.12
21	43523004	ALL	QUICK DISCONNECT ASSEMBLY	5.24
22	160017--	ALL	LOCK RING	.58
23	36131085	F5914900	TRUNNION COVER - RIGHT	2.26
	36131124	F5915900, F5917900, F5918900, FH50045	TRUNNION COVER - RIGHT MAG GRAY	2.26
24	32434007	ALL	REAR AXLE	1.12
25	38522091	ALL	REAR WHEEL - MAGNESIUM GRAY	1.47

MODEL No.

F5914-900  
F5915-900  
F5917-900  
F5918-900  
FH50045



SteamVac



SteamVac with CLEAN SURGE

15

PART LISTING / PRICE LIST

ITEM	PART NUMBER	MODELS TO FIT	PART DESCRIPTION	LIST COST
26	38458042	ALL	HANDLE RELEASE LEVER - BLACK	4.07
27	38784063	ALL	STANDPIPE SEAL	3.39
28	27212077	F5914900	MOTOR ASSEMBLY	64.73
	27212074	F5915900, F5917900, F5918900, FH50045	MOTOR ASSEMBLY	56.39
29	33241001	ALL	ELBOW CONNECTOR	2.26
30	40309027	F5914900	MOTOR COVER	21.54
	37196190	F5915900, F5917900, F5918900, FH50045	MOTOR COVER	9.63
31	21447232	ALL	SCREW - SELF TAPPING	.57
32	90001229	ALL	TANK RELEASE LATCH - LEFT MAG GRAY	2.26
33	90001228	ALL	TANK RELEASE LATCH - RIGHT MAG GRAY	2.26
34	42272134	ALL	SOLUTION TANK WITH CAP	34.01
35	38784062	ALL	GASKET	1.46
36	90001288	ALL	CAP ASSEMBLY - BLACK	1.69
37	39457053	ALL	SOLUTION TANK HANDLE	2.17
38	48439013	F5914900 (ALL)	TURBINE NOZZLE WITH RELEASE	28.34
39	38312014	ALL	SPRING	1.12
40		ALL	VALVE RING	N.A.
41	38784061	ALL	VALVE SEAL	1.12
42	38717009	ALL	VALVE STEM	2.26
43	36433212	ALL	TOOL HOLDER	1.89
44	38784060	ALL	SOLUTION TANK SEAL	1.46
45	43526018	ALL	RESERVOIR REGULATOR	8.93
46	40309002	ALL	TUBING	3.73
48	40201245	ALL	HANDLE HARDWARE ASSEMBLY	2.94
49	34113004	ALL	MOTOR SEAL	1.12
50		ALL	SCREW	N.A.
51	012227--	ALL	TERMINALS	.79
52	46583125	ALL	POWER CORD - 21'	14.60
53	38781048	ALL	MOTOR BASE SEAL	2.59
54	36131086	F5914900	TRUNNION COVER - LEFT	2.94
	36131125	F5915900, F5917900, F5918900, FH50045	TRUNNION COVER - LEFT MAG GRAY	.93
55	38434025	ALL	SWITCH ACTUATOR LEVER	3.39
56	28218061	ALL	SWITCH	2.80
57	90001281	ALL	CORD RETAINER - BLACK	.85

MODEL No.

F5914-900  
F5915-900  
F5917-900  
F5918-900  
FH50045



SteamVac

SpinScrub  
The Multiple Brush System only from Hoover



SteamVac  
with  
CLEAN  
SURGE™

15

PART LISTING / PRICE LIST

ITEM	PART NUMBER	MODELS TO FIT	PART DESCRIPTION	LIST COST
58	42274005	F5914900	NOZZLE BASE ASSEMBLY	21.54
	37272117	F5915900, F5917900, F5918900, FH50045	NOZZLE BASE ASSEMBLY - MAG GRAY	18.48
59	37276022	F5914900	HANDLE COVER	10.20
	37276037	F5915900, F5917900, F5918900, FH50045	HANDLE COVER - MAGNESIUM GRAY	PENDING
60	39466114	ALL	LOWER HANDLE ASSEMBLY	47.07
61	90001346	ALL	LOWER TOOL HOLDER	4.86
62	21447041	ALL	SCREW	.58
63	38613040	ALL	NOZZLE BODY WITH BRUSH	9.30
64	36433219	ALL	UPPER HOSE HOLDER	2.22
65	90001351	F5914900	COMPLETE HOSE ASSEMBLY	41.99
	43491075	F5915900, F5917900, F5918900, FH50045	COMPLETE HOSE ASSEMBLY	41.09
66	38613040	ALL	NOZZLE BODY WITH BRUSH	9.30
67	43513010	ALL	CONNECTOR COUPLER	3.73
68	48445003	ALL	BRUSH BLOCK ASSEMBLY - HOSE TOOL	1.54
69	37276011	F5915900, F5917900, FH50045	TOOL COVER	4.86
	37276033	F5918900	TOOL COVER	4.86
70	39466113	ALL	UPPER HANDLE	27.54
71	39442043	F5914900	CORD WRAP	2.03
	39442048	F5915900, F5917900, F5918900, FH50045	CORD WRAP - MAGNESIUM GRAY	1.14
72	38458056	ALL	CONTROL ROD - UPPER	3.73
73	38434029	ALL	CONTROL LEVER	2.03
74	39458007	F5914900	UPPER HANDLE LEVER GUARD	6.79
	39458060	F5915900, F5917900, F5918900, FH50045	UPPER HANDLE LEVER GUARD - MAG GRAY	2.66
75	21447255	ALL	SCREW - SELF TAPPING	1.12
76	37276035	ALL	SOLUTION TUBE COVER	.70
77	38458033	ALL	CONTROL ROD - LOWER	1.46
78	38458055	ALL	CONTROL ROD - UPPER BACK	3.73
79	38433079	ALL	SOLUTION BUTTON	1.12
80	51639165	ALL	LABEL - CLEAN SURGE	5.09
81	36132004	ALL	TUBING RETAINER	1.12

MODEL No.

F5914-900  
F5915-900  
F5917-900  
F5918-900  
FH50045



SteamVac

SpinScrub  
The Multiple Brush System only from Hoover



SteamVac™  
WITH  
CLEAN  
SURGE™

15

PART LISTING / PRICE LIST

ITEM	PART NUMBER	MODELS TO FIT	PART DESCRIPTION	LIST COST
82	38769028	ALL	EXHAUST DUCT	2.59
83	38719027	ALL	FLOAT RETAINER	2.59
84	43538001	ALL	FLOAT ASSEMBLY	3.73
85	38784070	ALL	FLOAT RETAINER SEAL	2.59
86	38433074	ALL	TRIGGER	1.12
87	37276006	ALL	WAND COVER	1.12
88	21447239	ALL	SCREW	.57
89	43513024	ALL	WAND VALVE ASSEMBLY - LARGER NIPPLE	1.69
90	38312019	ALL	SPRING	1.12
91	42272134	ALL	SOLUTION TANK WITH CAP	34.01
92	38777106	FH50045	RECOVERY TANK WITH DUCT ONLY REVISED	15.25
93	39514003	ALL	NOZZLE CLEAN OUT TOOL	.54
	43412007	ALL	NOZZLE/VALVE ASSEMBLY	4.53
	51638055	ALL	LABEL - HANDLE RELEASE	.89
	51639124	F5914900	LABEL - DOOR	1.12
	51639196	F5915900, F5917900, F5918900, FH50045	LABEL - DOOR	.07
	51855030	F5914900	LABEL - SPEED ACTUATOR	4.01
	51639192	F5915900, F5917900, F5918900, FH50045	LABEL - BRUSH SPEED	2.26
	51865024	ALL	LABEL - ON/OFF	.89
	49811079	ALL	LEAD WIRE - WHITE	1.12
	49811080	ALL	LEAD WIRE - PURPLE	1.12
	49811081	ALL	LEAD WIRE - RED	1.12
	57333023	F5914900 (ALL)	CARPET CLEANING SOLUTION 16 OZ	2.59 NON DISC
	40301448	F5914900 (ALL)	DETERGENT 32 OZ	7.14 NON DISC
	40322016	F5914900 (ALL)	PRE-CLEANER 16 OZ	2.74 NON DISC
	40311048	F5917900, FH50045 (ALL)	CARPET / UPHOLSTERY DETERGENT CLEANING SOLUTION 48 OZ	5.76
	40301432	FH50045 (ALL)	ULTRA DETERGENT 32 OZ	5.00 NON DISC
	40303037	FH50045 (ALL)	FLOOR DETERGENT 32 OZ	5.00 NON DISC
	43412003	FH50045 (ALL)	SPRAYER	3.39
	90001331	FH50045 (ALL)	BARE FLOOR TOOL ASSEMBLY	6.23
	57335024	F5918900 (ALL)	PREMIUM PET DETERGENT	PENDING

MODEL No.

F5914-900  
F5915-900  
F5917-900  
F5918-900  
FH50045