



SERVICE PARTS LIST

BULLETIN NO.
54-06-1510

SPECIFY CATALOG NO. AND SERIAL NO. WHEN ORDERING PARTS		REVISED BULLETIN	DATE
14.4 V CORDLESS CAULK GUN			Oct. 2006
CATALOG NO.	6562-23	SERIAL NUMBER	A92A
			WIRING INSTRUCTION SEE REVERSE SIDE

00
0

EXAMPLE:
Component Parts (Small #) Are Included
When Ordering The Assembly (Large #).

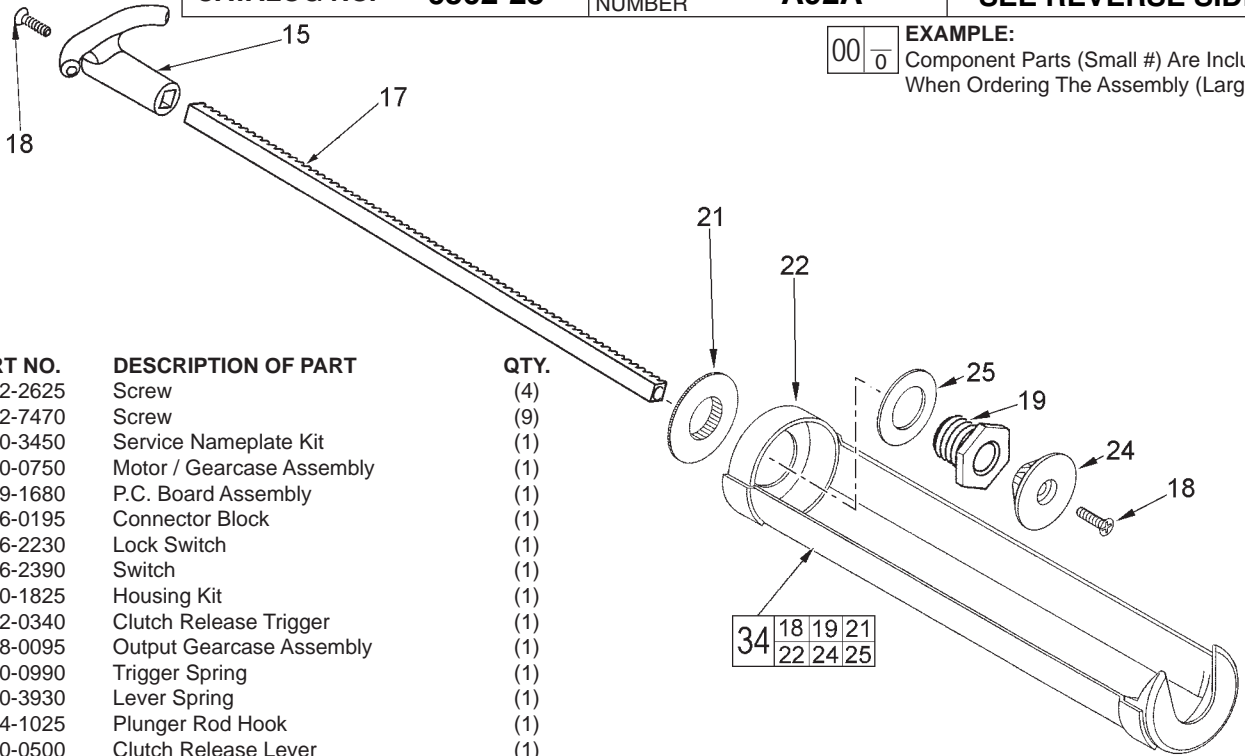
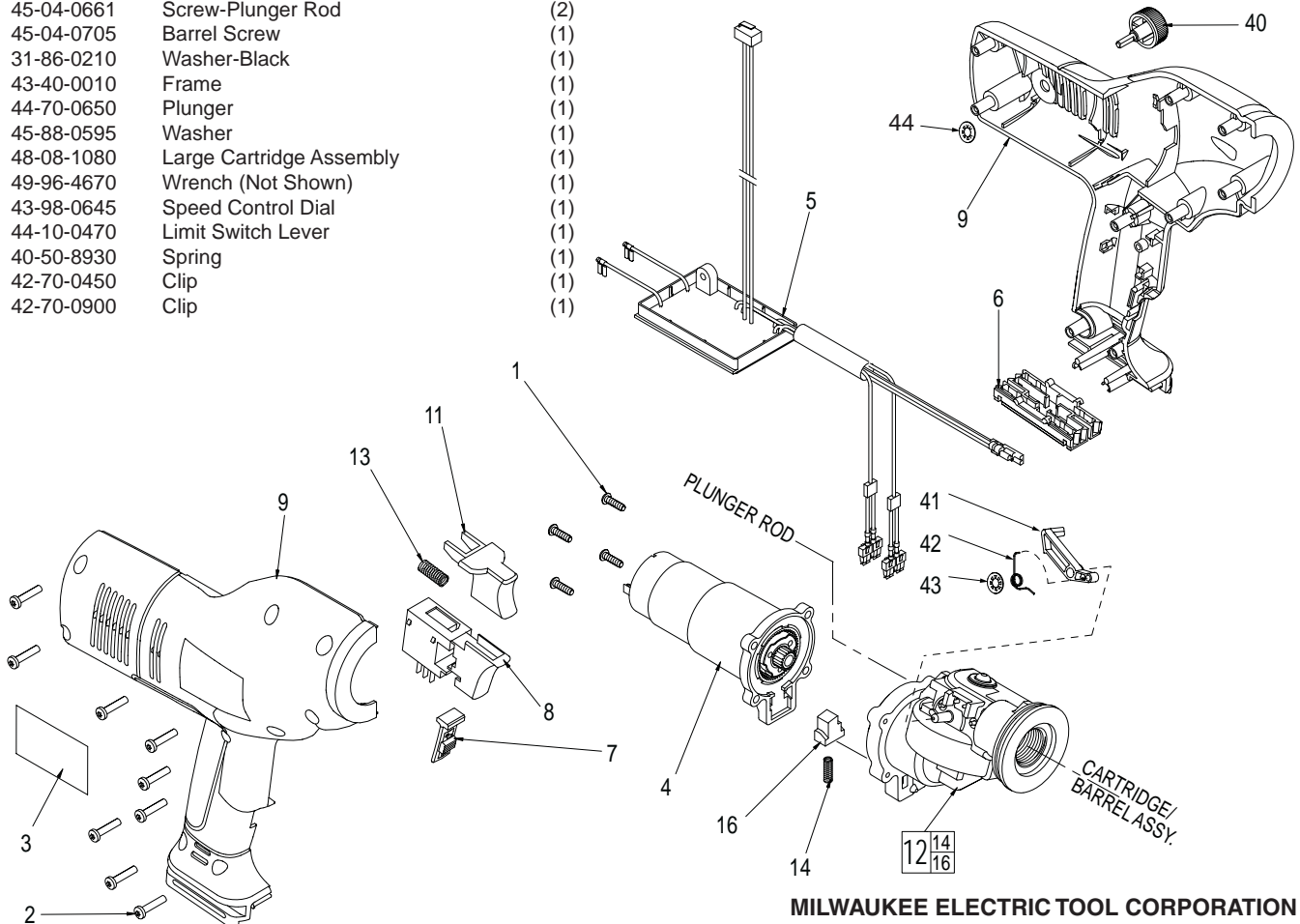
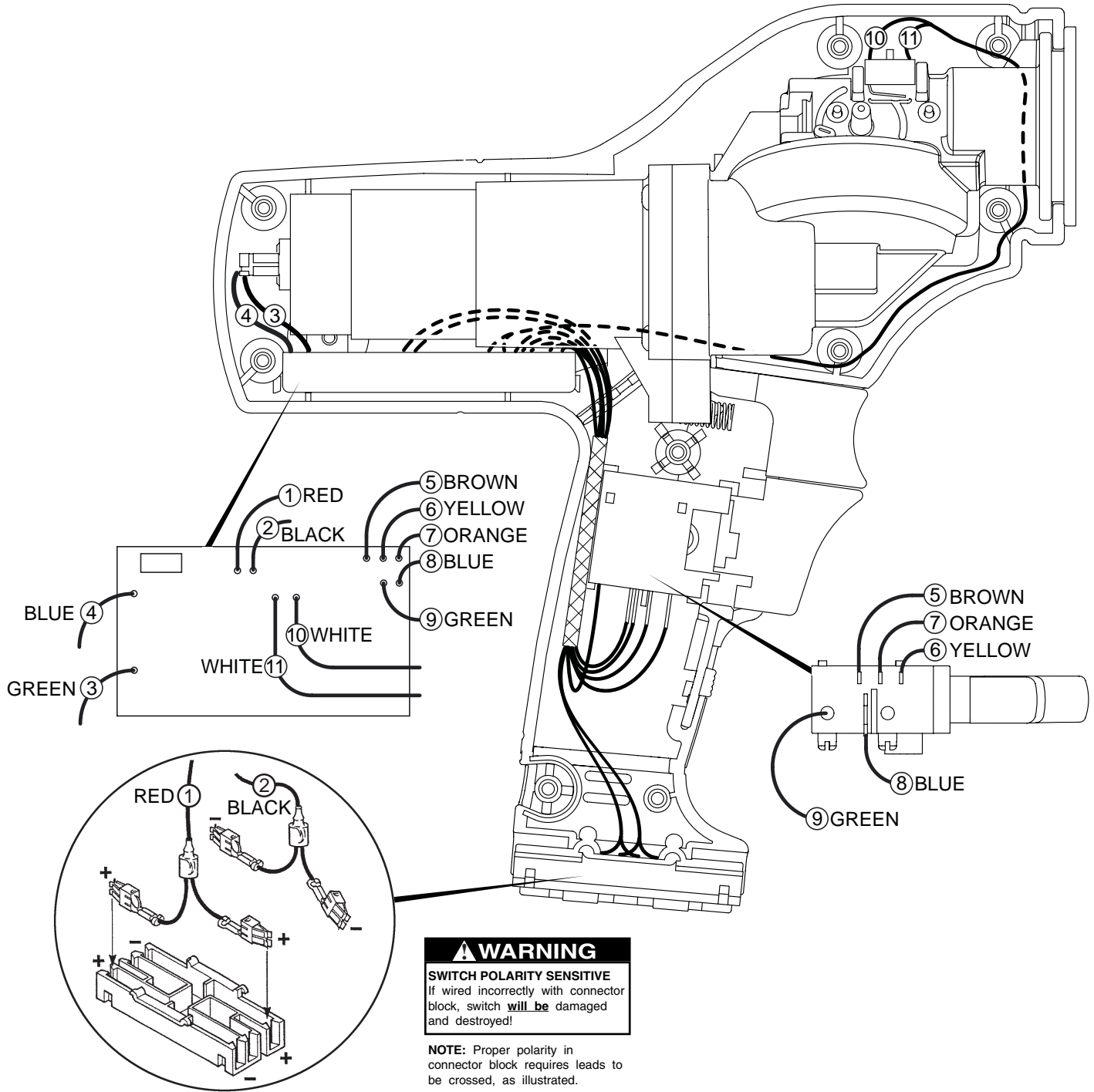


FIG.	PART NO.	DESCRIPTION OF PART	QTY.
1	06-82-2625	Screw	(4)
2	06-82-7470	Screw	(9)
3	12-20-3450	Service Nameplate Kit	(1)
4	14-50-0750	Motor / Gearcase Assembly	(1)
5	22-09-1680	P.C. Board Assembly	(1)
6	22-56-0195	Connector Block	(1)
7	23-66-2230	Lock Switch	(1)
8	23-66-2390	Switch	(1)
9	31-50-1825	Housing Kit	(1)
11	31-92-0340	Clutch Release Trigger	(1)
12	32-48-0095	Output Gearcase Assembly	(1)
13	40-50-0990	Trigger Spring	(1)
14	40-50-3930	Lever Spring	(1)
15	31-44-1025	Plunger Rod Hook	(1)
16	44-10-0500	Clutch Release Lever	(1)
17	49-52-0650	Plunger Rod	(1)
18	45-04-0661	Screw-Plunger Rod	(2)
19	45-04-0705	Barrel Screw	(1)
21	31-86-0210	Washer-Black	(1)
22	43-40-0010	Frame	(1)
24	44-70-0650	Plunger	(1)
25	45-88-0595	Washer	(1)
34	48-08-1080	Large Cartridge Assembly	(1)
38	49-96-4670	Wrench (Not Shown)	(1)
40	43-98-0645	Speed Control Dial	(1)
41	44-10-0470	Limit Switch Lever	(1)
42	40-50-8930	Spring	(1)
43	42-70-0450	Clip	(1)
44	42-70-0900	Clip	(1)

LARGE CARTRIDGE ASSEMBLY



MILWAUKEE ELECTRIC TOOL CORPORATION
13135 W. LISBON RD., BROOKFIELD, WI 53005
Drwg. 3



⚠ WARNING
SWITCH POLARITY SENSITIVE
 If wired incorrectly with connector block, switch **will be** damaged and destroyed!

NOTE: Proper polarity in connector block requires leads to be crossed, as illustrated.

WIRING SPECIFICATIONS

Wire No.	Wire Color	Origin or Part No.	Gauge	Length	Terminals, Connectors and End Wire Preparation
1	Red	*	20	8.75	* Component of the circuit board assembly.
2	Black	*	20	8.75	* Component of the circuit board assembly.
3	Green	*	20	1.80	* Component of the circuit board assembly.
4	Blue	*	20	1.80	* Component of the circuit board assembly.
5	Brown	*	20	7.00	* Component of the circuit board assembly.
6	Yellow	*	20	7.00	* Component of the circuit board assembly.
7	Orange	*	20	7.00	* Component of the circuit board assembly.
8	Blue	*	20	7.00	* Component of the circuit board assembly.
9	Green	*	20	7.00	* Component of the circuit board assembly.
10	White	*	20	10.75	* Component of the circuit board assembly.
11	White	*	20	10.75	* Component of the circuit board assembly.

BULK LEAD WIRE - BULLETIN 58-01-0003

NOTE:
 All lead lengths are before stripping.
 All leads must be held to ± .125" unless specified elsewhere.
 Strip wire per ES 13-11.
 Crimp terminals per ES 13-15.

TERMINAL DESCRIPTION		
Code	Part No.	Qty.